

SOLUTIONS BY MARKET



TOWING & RECOVERY



CARRIERS, WRECKERS & ROTATORS

/ VENDOR PARTNERS

JERR-DAN

Drive Products is a distributor for world class Jerr-Dan tow equipment in Canada. With branches located nationwide, you can be sure that the Drive Products branch near you has the capabilities and know-how to support the towing industry.



SPECIALTY AUTOMOBILE

/ VENDOR PARTNERS

KARGO KING
ROLL-OFF SYSTEMS

Kargo King has established the solution for towing speciality automobiles. With the most stable deck and payload distribution available, the Kargo King Tow System ensures safe ground level loading and unloading of your automobile. Low clearance loading and unloading protects the integrity of your vehicle and multiple tie down options ensures safe transportation from start to finish.

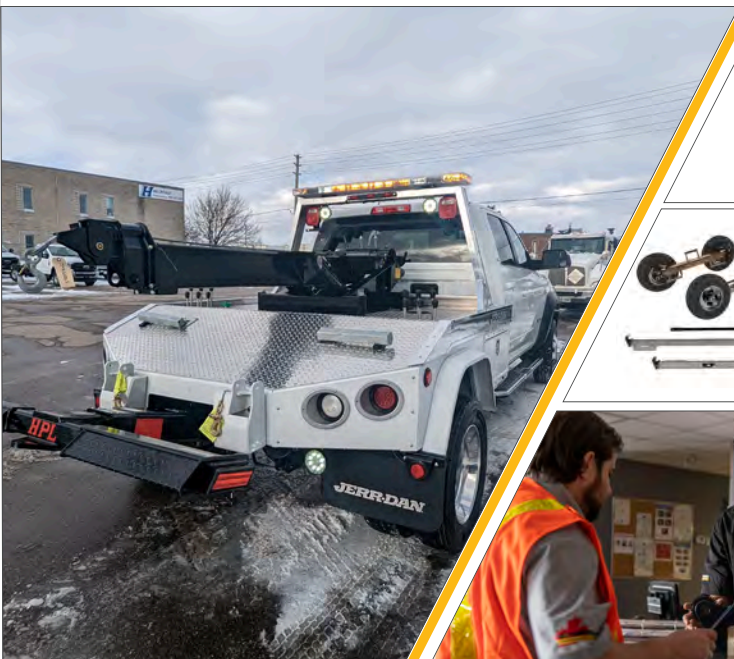


PTO, HYDRAULICS & WINCHES

PTO • GEAR BOXES & TRANSFER CASE INDUSTRIAL WINCH • HOISTS • RECREATIONAL WINCH • HYDRAULIC VALVES • HYDRAULIC TANKS/RESERVOIRS • HYDRAULIC PUMPS • HYDRAULIC MOTORS • HYDRAULIC HOSE & FITTINGS • HYDRAULIC FILTERS • HEATING & COOLING • COUPLINGS, MOUNTS & MANIFOLDS

/ VENDOR PARTNERS

INTERPUMP BRANDS



NATIONAL PARTS & SERVICE

LOCAL PARTS & SERVICE CENTERS • SERVICE NETWORK PARTNERS • DESIGN & ENGINEERING • WEIGHT DISTRIBUTION & ANALYSIS

*SERVICE MAY DIFFER BASED ON REGION. CONTACT US FOR MORE INFORMATION.

MANUFACTURING



TILLSONBURG

TILLSONBURG EXPANSION PROGRESS

WINDSOR

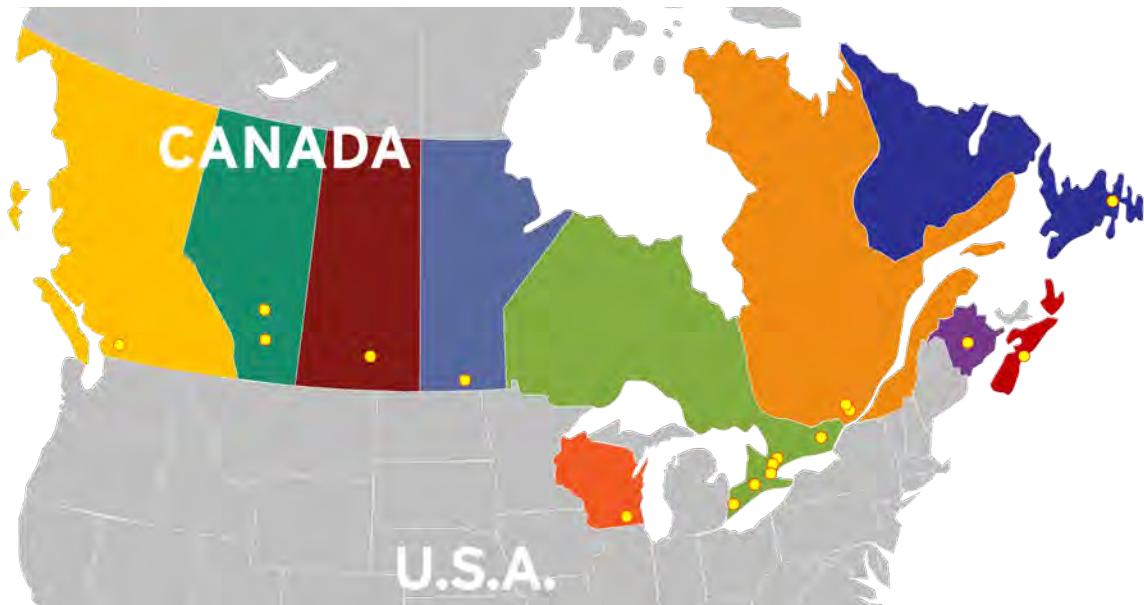
MORDEN EXPANSION PROGRESS

Voth manufacturing facility is located in Tillsonburg, ON, Canada. Voth Truck Bodies serves Canada and the U.S. with steel, aluminum and hybrid truck bodies and is also a manufacturer of Kargo King Roll-Off Systems, Big Max Roll-Off Systems, SnowBull Snowplows and is the new home of the DEL JOB BOSS Dump Body. In July 2020, Voth is expanding its' manufacturing footprint, with 25 acres of land adjacent to the existing facility in Tillsonburg, ON. This expansion project is now underway as we prepare for a new national equipment storage center and pool stock lot.

The GWA team has been managing a building expansion at the Windsor manufacturing and upfitting facility since the fall of 2019. With the intention to increase manufacturing space, and integrate Drive Products upfitting, this expansion aimed to double the existing footprint at that location with an additional 40,000 sq.ft. As the building project reaches completion, GWA is excited for the addition of new technology and expanded footprint in Windsor.

In February 2021, we announced that our manufacturing division Voth would be expanding its operations in Western Canada. In Morden, we will be building a brand new "Voth West" manufacturing facility that will produce a mix of truck bodies and truck mounted equipment to support the strong demand in Canada's Western Markets.

NATIONAL FOOTPRINT (TOTAL AREA: 800,000+ SQ FT)



UPFITTING, SERVICE AND DISTRIBUTION PHONE NUMBERS

/ Toronto (H.O.)	TEL 905.564.5800	/ Laval	TEL 514.519.0367
/ Newmarket	TEL 289.453.1090	/ Halifax	TEL 902.468.8288
/ Etobicoke	TEL 416.619.1573	/ Moncton	TEL 560.388.3465
/ Tillsonburg	TEL 519.842.7200	/ Regina	TEL 306.359.3677
/ Windsor	TEL 519.727.4398	/ Edmonton	TEL 780.960.6826
/ Ottawa	TEL 613.691.4196	/ Calgary	TEL 403.720.8033
/ Montréal	TEL 514.856.0407	/ Vancouver	TEL 604.888.4464
/ Winnipeg	TEL 204.201.1036	/ Morden	TEL 204.201.1197

