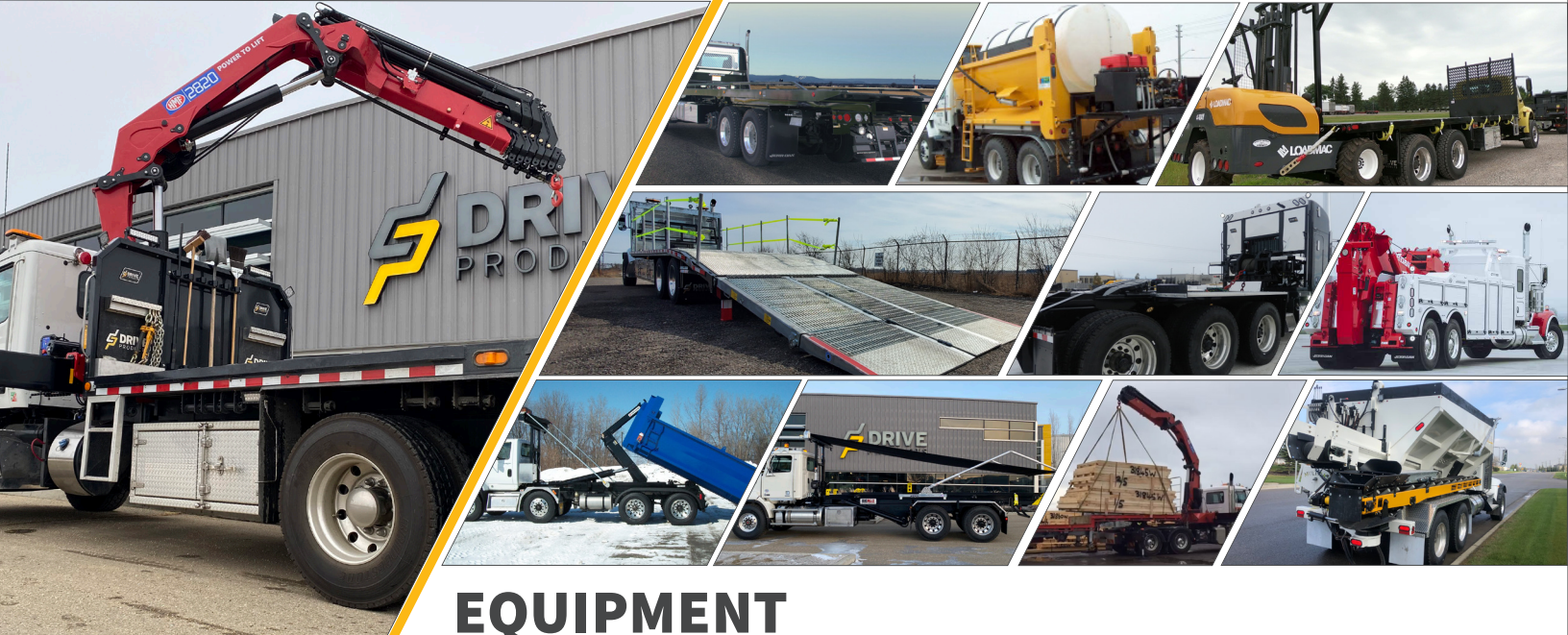


SOLUTIONS BY MARKET



POWER BEYOND / HEAVY TRUCKS



EQUIPMENT

MATERIAL SPREADERS • CRANES & STABILIZERS • HOOKLIFTS • AERIALS • FLAT DECK • DUMP BODY* • BEAVERTAIL
• ROLL-OFFS* • LIFT GATES • TOW HEAVY WRECKERS, CARRIERS & ROTATORS • PLOWS • SNOW & ICE EQUIPMENT •
WINCH TRACTOR*

/ VENDOR PARTNERS



*SOME PRODUCTS AND BRANDS ARE AVAILABLE IN SPECIFIC REGIONS ONLY.



BULK TRANSPORT & WETLINE KITS

BLOWERS • PRODUCT PUMPS • COMPRESSORS
WETLINE KITS: LOWBOY • GOOSENECK • CUSTOM/SPECIALIZED TRAILER APPLICATIONS
- END DUMP • LIVE BOTTOM • FLOAT GOOSENECK • WALKING FLOOR

/ VENDOR PARTNERS

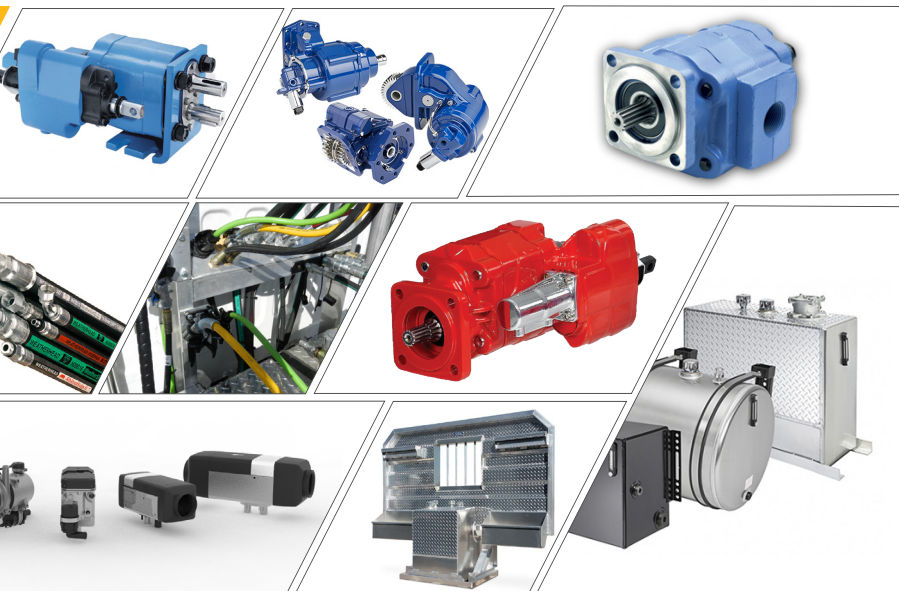




DRIVELINE & CONTROLS

REMOTE CONTROLS • PNEUMATIC CONTROLS • ELECTRONIC CONTROLS • CUSTOM CONSOLE • CABLE CONTROLS

/ VENDOR PARTNERS



PARTS DISTRIBUTION

REMOTE CONTROLS • PNEUMATIC CONTROLS • ELECTRONIC CONTROLS • CUSTOM CONSOLE • CABLE CONTROLS
• HYDRAULIC TANKS/RESERVOIRS • HYDRAULIC PUMPS • HYDRAULIC MOTORS • HYDRAULIC HOSE & FITTINGS •
HYDRAULIC FILTERS • HEATING & COOLING • COUPLINGS, MOUNTS & MANIFOLDS

/ VENDOR PARTNERS



MANUFACTURING



TILLSONBURG

TILLSONBURG
EXPANSION PROGRESS

WINDSOR

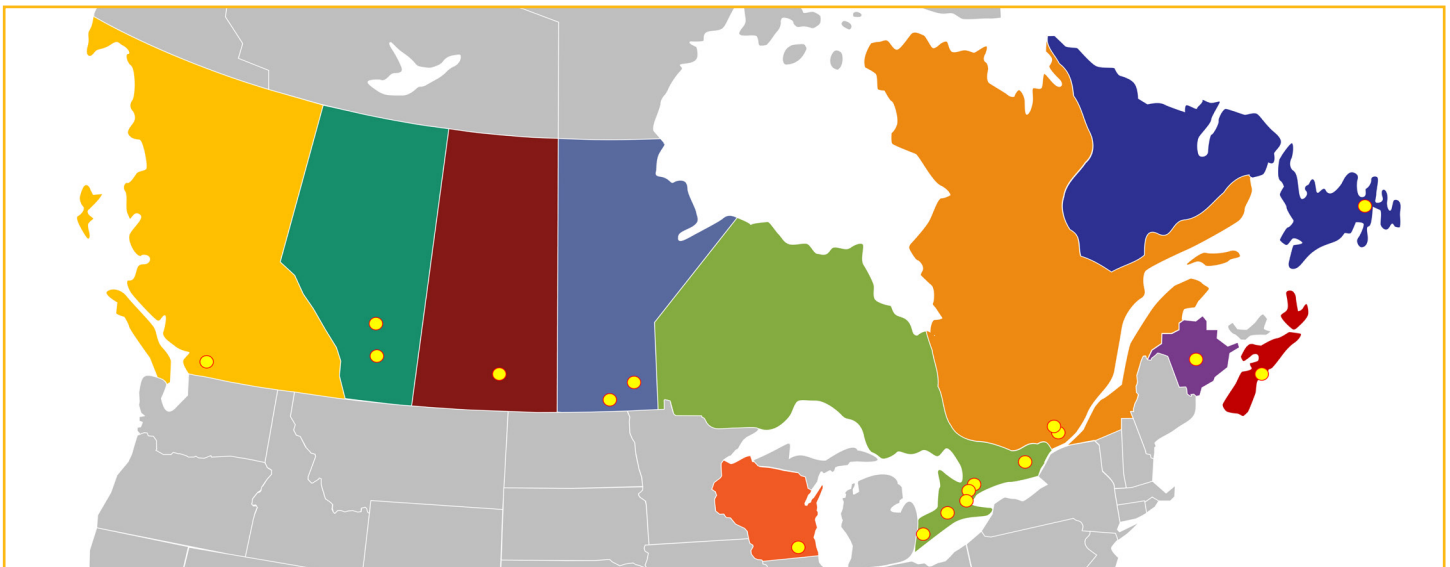
MORDEN
EXPANSION PROGRESS

Drive Products – Manufacturing Division boast 3 state of the art manufacturing facilities with combined over 200,000 sq.ft. of manufacturing space. All our facilities specialize in premium aluminum manufacturing with CWB (Canadian Welding Bureau) certification ensuring our manufacturing process maintains the highest quality products at every stage.

Our facilities follow strict quality guidelines required in ISO certification or equivalent accreditation. Our manufacturing process is robust and follows rigorous quality testing and welding practices on every component of truck bodies, and equipment that we build. In combination with our engineers, skilled trade employees and cutting-edge technology (laser, punching, CNC milling, CNC press brake, manual and robotic welding, zinc plating, e-coat, wet paint and powder coat). Drive Products – Manufacturing Division is set to meet the demands of North American market.

In 2022, we are set to complete expansion projects at our Tillsonburg and Windsor facilities as well as a new facility in Morden, Manitoba.

NATIONAL FOOTPRINT (TOTAL AREA: 800,000+ SQ FT)



UPFITTING, SERVICE AND DISTRIBUTION PHONE NUMBERS

/ Toronto (H.O.)	TEL 905.564.5800	/ Moncton	TEL 506.388.3465
/ Etobicoke	TEL 416.619.1573	/ Morden	TEL 204.201.1197
/ Newmarket	TEL 289.453.1090	/ Winnipeg	TEL 204.201.1036
/ Tillsonburg	TEL 519.842.7200	/ Regina	TEL 306.359.3677
/ Windsor	TEL 519.727.4398	/ Edmonton	TEL 780.960.6826
/ Ottawa	TEL 613.691.4196	/ Calgary	TEL 403.720.8033
/ Montréal	TEL 514.856.0407	/ Vancouver	TEL 604.888.4464
/ Laval	TEL 514.519.0367	/ Elkhorn	TEL 262.723.7914
/ Halifax	TEL 902.468.8288		



POWER BEYOND
driveproducts.com