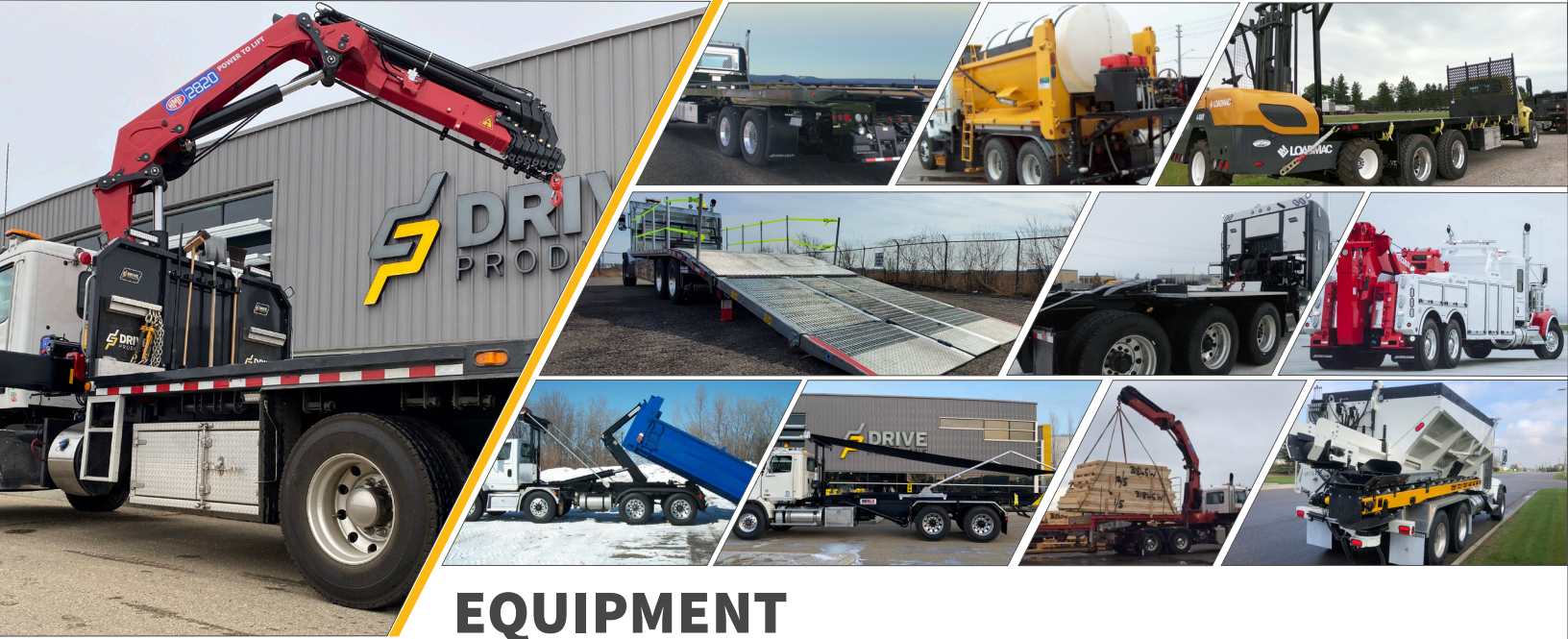


# SOLUTIONS BY MARKET



**POWER BEYOND / HEAVY TRUCKS**





## EQUIPMENT

MATERIAL SPREADERS • CRANES & STABILIZERS • HOOKLIFTS • AERIALS • FLAT DECK • DUMP BODY\* • BEAVERTAIL  
 • ROLL-OFFS\* • LIFT GATES • TOW HEAVY WRECKERS, CARRIERS & ROTATORS • PLOWS • SNOW & ICE EQUIPMENT •  
 WINCH TRACTOR\*

### / VENDOR PARTNERS



\*SOME PRODUCTS AND BRANDS ARE AVAILABLE IN SPECIFIC REGIONS ONLY.



## BULK TRANSPORT & WETLINE KITS

BLOWERS • PRODUCT PUMPS • COMPRESSORS  
 WETLINE KITS: LOWBOY • GOOSENECK • CUSTOM/SPECIALIZED TRAILER APPLICATIONS  
 - END DUMP • LIVE BOTTOM • FLOAT GOOSENECK • WALKING FLOOR

### / VENDOR PARTNERS







## DRIVELINE & CONTROLS

REMOTE CONTROLS • PNEUMATIC CONTROLS • ELECTRONIC CONTROLS • CUSTOM CONSOLE • CABLE CONTROLS

VENDOR PARTNERS



## PARTS DISTRIBUTION

REMOTE CONTROLS • PNEUMATIC CONTROLS • ELECTRONIC CONTROLS • CUSTOM CONSOLE • CABLE CONTROLS  
 • HYDRAULIC TANKS/RESERVOIRS • HYDRAULIC PUMPS • HYDRAULIC MOTORS • HYDRAULIC HOSE & FITTINGS •  
 HYDRAULIC FILTERS • HEATING & COOLING • COUPLINGS, MOUNTS & MANIFOLDS

VENDOR PARTNERS



# MANUFACTURING



## TILLSONBURG

## TILLSONBURG EXPANSION PROGRESS

## WINDSOR

## MORDEN EXPANSION PROGRESS

Voth manufacturing facility is located in Tillsonburg, ON, Canada. Voth Truck Bodies serves Canada and the U.S. with steel, aluminum and hybrid truck bodies and is also a manufacturer of Kargo King Roll-Off Systems, Big Max Roll-Off Systems, SnowBull Snowplows and is the new home of the DEL JOB BOSS Dump Body. In July 2020, Voth is expanding its' manufacturing footprint, with 25 acres of land adjacent to the existing facility in Tillsonburg, ON. This expansion project is now underway as we prepare for a new national equipment storage center and pool stock lot.

The GWA team has been managing a building expansion at the Windsor manufacturing and upfitting facility since the fall of 2019. With the intention to increase manufacturing space, and integrate Drive Products upfitting, this expansion aimed to double the existing footprint at that location with an additional 40,000 sq.ft. As the building project reaches completion, GWA is excited for the addition of new technology and expanded footprint in Windsor.

In February 2021, we announced that our manufacturing division Voth would be expanding its operations in Western Canada. In Morden, we will be building a brand new "Voth West" manufacturing facility that will produce a mix of truck bodies and truck mounted equipment to support the strong demand in Canada's Western Markets.

## NATIONAL FOOTPRINT (TOTAL AREA: 800,000+ SQ FT)



### UPFITTING, SERVICE AND DISTRIBUTION PHONE NUMBERS

/ Toronto (H.O.)	TEL 905.564.5800	/ Laval	TEL 450.661.6209
/ Newmarket	TEL 416.421.5851	/ Halifax	TEL 902.468.8288
/ Etobicoke	TEL 416.321.0660	/ Moncton	TEL 560.388.3465
/ Tillsonburg	TEL 519.842.7200	/ Regina	TEL 306.359.3677
/ Windsor	TEL 519.727.4398	/ Edmonton	TEL 780.960.6826
/ Ottawa	TEL 613.691.4196	/ Calgary	TEL 403.720.8033
/ Montréal	TEL 514.856.0407	/ Vancouver	TEL 604.888.4464
/ Winnipeg	TEL 204.201.1036	/ Morden	TEL 204.201.1197

ISO Certified by an Accredited Registrar • National Safety Mark Approval • ©Drive Products 2021  
Drive Products reserves the right to make changes in specifications, packages, or to discontinue options without notice at any time.

**DRIVE**  
PRODUCTS  
SOLUTIONS / PARTNERS / SERVICES  
**POWER BEYOND**  
driveproducts.com