

TRUCK EQUIPMENT SOLUTIONS

LIGHT & MEDIUM TRUCKS

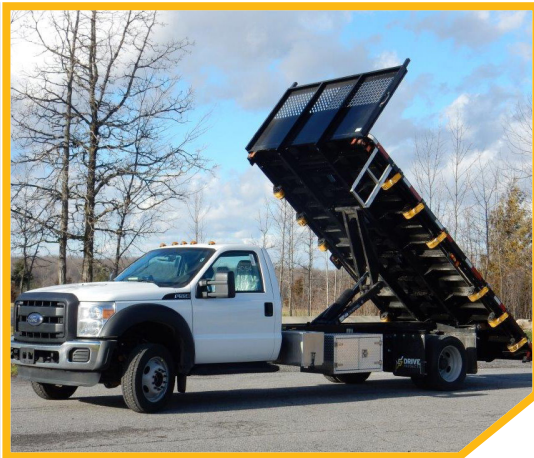


TABLE OF CONTENTS

About Us.....1

National Footprint..... 2

Landscape Dump Bodies.....4

Chipper Bodies..... 5

Flat Deck Body (Fixed & Dumping)..... 6

Roll-Off System

 cTwo Rental Series7

 cFive & cSix Detachable Series 8

 cSix Rental or Lumber Series..... 9

Cranes10

Pressure Trucks 11

Service Bodies..... 12

Aerials 13

Snow & Ice Equipment.....14

Dump Body Pick Up Insert.....15

Fleet - Van Shelving.....16

Tool Boxes & Accessories..... 17-18



ABOUT US

THE BEGINNING

Recognizing a need for industry specialists, Greg Edmonds established Drive Products in 1983 to supply products and systems to the Truck Mounted Equipment industry in Ontario. The foundation was set with a leased 3,000 sq.ft. building in Toronto, three employees, and \$100,000 starting inventory. Drive Products' success continued in the form of exponential growth with help from partners with a wealth of knowledge and experience who shared a common vision. Operations were expanded through the addition of branch locations and the integration of driveline and cable manufacturing. The company strengthened its market position by securing an exclusive distribution arrangement with Muncie Power Products and by acquiring additional complimentary product lines.

DRIVE PRODUCTS TODAY

Drive Products continues to operate as a family-owned business with Robert Edmonds in the main leadership role as President. Drive Products now offers a complete range of truck mounted equipment, products, services and solutions through a growing branch and partner network across North America. Drive Products has continued to build on its diversification strategy centered around strong distribution, systems integration, upfitting and manufacturing capabilities. Most recently, Drive Products has established its position as a leader of truck equipment manufacturing in Canada with the additions of premium truck equipment manufacturers Kargo King Roll Off Systems (2013), Voth Truck Bodies (2014), Snowbull Tractor Plows (2017), G.W. Anglin (2019) and Del Equipment (2020).

DRIVE PRODUCTS TOMORROW

Drive Products will continue its commitment to providing premium solutions, products and services across North America with the best people in the industry. The 2019 addition of GW Anglin manufacturing and light upfitting is the latest example of our commitment to better serve our customer base in Canada and U.S.A. Drive Products is now uniquely positioned to provide regional and national fleets with the full range of upfitting services from Light Truck & Van to Class 8 Heavy Truck. Drive Products will continue to seek opportunities and improve capabilities with the goal of adding increased value to our customers into the years to come.

OUR MISSION

Providing premium quality solutions, products and services from
the best people in the industry

CORE VALUES

INTEGRITY

RESPONSIVENESS

QUALITY FOCUSED

PASSIONATE

NATIONAL FOOTPRINT (TOTAL AREA: 800,000 SQ.FT.+)



VANCOUVER

Address: 19150 96 Ave #1, Surrey
 Building Size: 29,000 sq. ft.
 Shop Sq. Ft.: 28,000 sq. ft.

EDMONTON

Address: 26230 Township Rd
 531A #111, Acheson
 Building Size: 90,000 sq. ft.
 Shop Sq. Ft.: 40,000 sq. ft.

CALGARY

Address: 4311 122 Ave SE, Calgary
 Building Size: 30,246 sq. ft.
 Shop Sq. Ft.: 12,000 sq. ft.

REGINA

Address: 338 Mill Street, Regina
 Building Size: 15,000 sq. ft.
 Shop Sq. Ft.: 13,000 sq. ft.

WINNIPEG

Address: 10 Keenleyside St.,
 Winnipeg
 Building Size: 23,000 sq. ft.
 Shop Sq. Ft.: 10,000 sq. ft.

MORDEN

Address: 480 9th St. South,
 Morden
 Building Size: 14,500 sq. ft.
 Shop Sq. Ft.: 9,500 sq. ft.

MORDEN - MANUFACTURING FACILITY

Address: COMING SOON
 Building Size: 56,000 sq. ft.
 Shop Sq. Ft.: 50,000 sq. ft.

TILLSONBURG - VOTH MANUFACTURING

Address: 66 Norfolk County Rd 13,
 Courtland
 Building Size: 100,000 sq. ft.
 Shop Sq. Ft.: 100,000 sq. ft.

WINDSOR - GWA MANUFACTURING

Address: 220 Patillo Rd RR#1
 Tecumseh
 Building Size: 80,000 sq. ft.
 Shop Sq. Ft.: 70,000 sq. ft.

OTTAWA

Address: 1611 Liverpool Crt.,
 Ottawa
 Building Size: 25,116 sq. ft.
 Shop Sq. Ft.: 21,000 sq. ft.

MISSISSAUGA - HEAD QUARTERS & GLOBAL DISTRIBUTION CENTRE

Address: 1665 & 1666 Shawson
 Dr. Mississauga
 HQ & ON Service Centre Bldg
 Size: 77,000 sq. ft.
 Shop Sq. Ft.: 20,000 sq. ft.
 Global Distribution Centre Bldg
 Size: 71,600 sq. ft.

ETOBICOKE - GWA UPFITTING FACILITY

Address: 10 McLachlan Dr.,
 Etobicoke
 Building Size: 38,000 sq. ft.
 Shop Sq. Ft.: 20,000 sq. ft.

NEWMARKET

Address: 100 Harry Parkway,
 Newmarket
 Building Size: 20,153 sq. ft.
 Shop Sq. Ft.: 10,000 sq. ft.

MONTREAL

Address: 900 Montée de Liesse,
 St-Laurent
 Building Size: 26,524 sq. ft.
 Shop Sq. Ft.: 5,000 sq. ft.

LAVAL - GWA/AMTECH UPFITTING FACILITY

Address: 3737 Boulevard Lite,
 Laval
 Building Size: 67,000 sq. ft.
 Shop Sq. Ft.: 50,000 sq. ft.

HALIFAX

Address: 141 Joseph Zatzman Dr.,
 Dartmouth
 Building Size: 7,155 sq. ft.
 Shop Sq. Ft.: 4,000 sq. ft.

MONCTON

Address: 541 Ferdinand Blvd.,
 Dieppe
 Building Size: 9,600 sq. ft.
 Shop Sq. Ft.: 5,000 sq. ft.

ELKHORN

Address: 977 Koopman Ln,
 Elkhorn
 Building Size: 20,000 sq. ft.
 Shop Sq. Ft.: 14,000 sq. ft.

ST. JOHN'S

Address: COMING SOON
 Building Size: 15,000 sq. ft.
 Shop Sq. Ft.: 10,000 sq. ft.

LANDSCAPE DUMP BODIES



"JOB BOSS"

STEEL, HYBRID (STEEL BODY AND ALUMINUM GATES) & ALUMINIUM

From Light Duty to Contractor Grade Landscape Dump Bodies, Drive Products offers a wide range of models that are boldly designed and manufactured for maximum durability based on today's demanding applications. All Landscape Dump Bodies are built with precision to provide superior service and reliability and are backed by an industry leading warranty.

AVAILABLE LENGTHS

- 9'9" (60" CA)
- 11'9" (84" CA)
- 12'9" (108" CA)
- 13'9" (120" CA)

**FOR FULL DUMP BODY SPECS, REFER
TO PRODUCT TEAR SHEETS AVAILABLE ON
VOTHTRUCKBODIES.COM

STEEL



HYBRID



ALUMINIUM





CHIPPER BODIES

ALUMINUM

Voth Aluminum Chipper Bodies are made for heavy-duty service, while offering an increased payload and fuel efficiency. The low mounting height allows for a low center of gravity with increased stability on the road and on the job site.



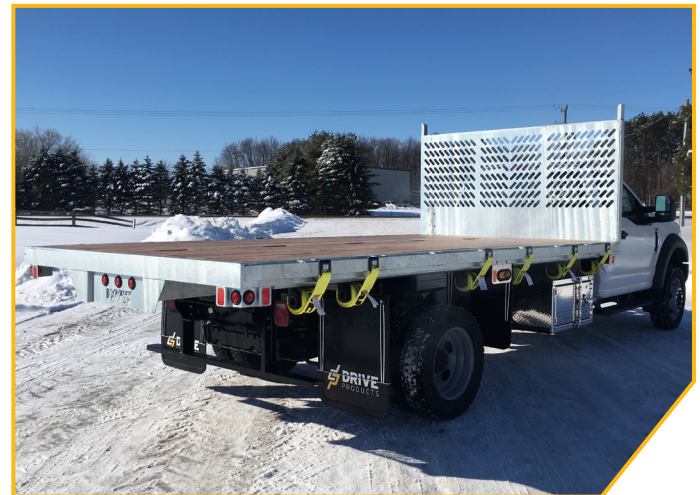
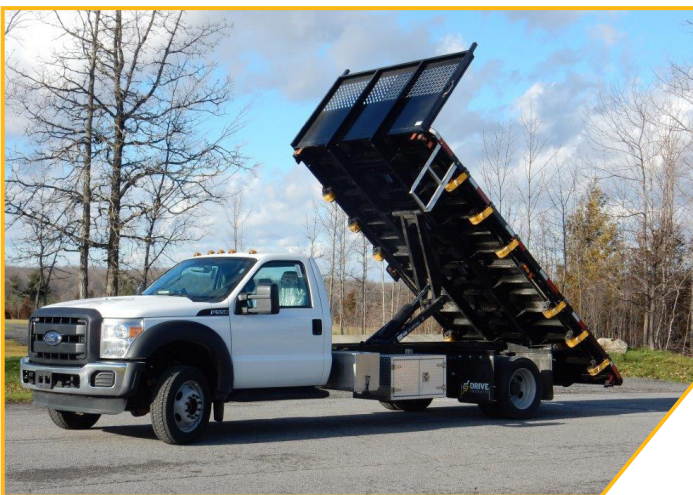
FLAT DECK BODIES

- *FIXED & DUMPING*



STEEL, GALVANIZED OR ALUMINUM WITH APITONG WOOD/ OR STEEL TOPS

The ideal team member for anyone in the lumber or home building industry, Voth Flat Decks is available in steel, aluminum, or galvanized steel with apitong wood floor. Available in fixed or dumping, make lumber deliveries a breeze with the optional rear roller.





ROLL OFF SYSTEM

KARGO KING CTWO RENTAL SERIES

Designed specifically for the needs of Equipment Rental fleets, the Kargo King Rental Deck is designed to accommodate low clearance equipment with it's signature beavertail, making the loading and unloading of scissor lifts and compaction equipment safe and efficient. Unlike traditional hook lift systems, Kargo King's 2-point latching mechanism design means the Rental Deck sits lower at ground level with gradual incline to accept specialized equipment.



ROLL OFF SYSTEM



KARGO KING CFIVE & CSIX DETACHABLE SERIES

The Kargo King Detachable System allows business owners and fleet managers to think and act differently! This one-of-a kind truck mounted roll off system was designed with the idea that contractors often need their trucks for more than one job type. By permanently mounting a truck body onto truck chassis', business owners tie up valuable working capital when these same truck bodies can be interchanged at a fraction of the overall cost. The Kargo King Detachable System is the comprehensive solution for business owners and fleet managers who wish to reduce capital expenditures (truck purchases) and decrease expenses (maintenance, insurance and fuel) related to their truck fleet.





ROLL OFF SYSTEM

KARGO KING CSIX RENTAL OR LUMBER SERIES

The Kargo King Rental System is a truck mounted roll off system specifically designed and engineered to meet the unique demands of present day rental equipment fleets. Over the past twenty years the number of rental equipment pieces introduced to market has increased dramatically in both volume and complexity. This increase has brought with it numerous challenges related to safe loading and transport of rental equipment. Be it small compaction equipment, scissor lifts or aerial devices, each piece of equipment presents its own potential safety concerns. The Kargo King Rental System addresses these concerns by design!

Supporting the Building Supply & Lumber Industry, Kargo King's Lumber Deck allows for the loading and unloading of building supply and materials at ground level. Safety on the job site and in your yard is our top priority, and Kargo King's lumber deck and roll-off system allows for safe work in any weather.



CRANES



TELESCOPIC AND SERVICE CRANES

Light and compact cranes for light duty or medium applications often utilized for in-field/mobile service work but versatile enough to for other special applications.



PRESSURE TRUCKS



DRIVE PRODUCTS

Drive Products specializes in custom built pressure trucks from one-ton to tandem and tri-axle applications. We offer a full line of pumps from 50hp to 600hp.



SERVICE BODIES



GWA, READING & VOTH STEEL AND ALUMINUM

Voth's all aluminum service body is manufactured in rugged, corrosion-resistant 5052-H32 marine grade aluminum. Heavy gauge construction provides additional strength, reducing maintenance and maintaining improved fuel efficiency and payload capacity at 45% lighter than steel.

The trusted high strength performance of your standard service body is now a multi-function truck to suit your industry. Rear cabinet crane reinforcement, specialized cabinetry and a durable powder coat finish will support you wherever your work takes you.



AERIALS

**ALDERCOTE**

Drive Products understands the importance of adding the highest quality aerial system to your team. You don't cut corners in your work, and you need equipment that is built on that same promise. Entrust Drive Products to assist you in choosing your aerial device configuration to get the most done for your unique job requirements.

ALDERCOTE

Aldercote manufactures fully integrated van mounted aerial lift solutions with unique features not found in competing brands.



SNOW & ICE EQUIPMENT



DRIVE PRODUCTS

Western Products are the leading manufacturer of snow and ice control products, with a full line of CONTRACTOR GRADE® snow plows for commercial snow plowing as well as personal-use and light municipal snow removal operations.

Western Products also offers a variety of hopper and tailgate-mounted ice control sand and salt spreaders, along with a wide selection of performance-enhancing snow plow and spreader accessories and parts.



DUMP BODY PICK UP INSERT

STEEL & ALUMINIUM

Voth Dump Body Pick Up Truck Inserts are custom designed for 1/2 , 3/4 and 1 ton short or long pickups.



PRODUCT INFORMATION:

- Landscape style
- Steel or Aluminium
- Twin Cylinders allow for lower mounting and higher lifting capacities
- 12V Single pump power back

FLEET - VAN SHELVING



VOTH FOR FORD TRANSIT

Build your fleet for success with Voth's line of standard van shelving and accessories. Created with the Ford Transit in mind, select the solutions to keep your business on the go with shelving, tool racks and cabinetry to keep your crew working safe and secure on the road.



TOOL BOXES & ACCESSORIES



ICONIC METALGEAR

X-PRO HIGH SIDE TRADES TRUCK

The shape of the packs follow the angle of the truck's cab to improve fuel economy. Featuring a built in ladder rack, adjustable shelves, flip up door with gas shocks, automotive bulb seal, rain gutter door frames, and keyed stainless handles that are also pad lockable. Each truck pack comes with either a front crossbox, or a chest box option. Mounting kits included, fits most full-size Ford pickups. Ladder rack capacity: 500lbs.

X-PRO LOW SIDE STORAGE PACKS

Low side truck packs are built from super heavy-duty, yet lightweight aluminum and will easily outlast your truck. Weighing only 275lbs, these boxes will make a very minimal dent in you truck's load capacity.

The centre tonneau lift cover offers full access to your truck bed; featuring gas shocks and a reinforced lid that can hold up to 500lbs. The deep side compartments allow for easy access from the ground and weather stripping offers arm protection when reaching deep inside the box.



GULLWING TOOLBOX

Built industry tough! The gullwing toolbox from Iconic MetalGear is a lightweight, heavy duty, pickup truck toolbox that is constructed entirely with aluminum. Offering a "big mouth" design that provides easier access and greater capacity, you'll be able to carry more tools than ever in your MetalGear gullwing toolbox. Each gullwing box comes standard with stainless steel action lock t-handles, stainless steel piano hinges, 80lbs gas shocks, heavy-duty automotive bulb seal, rubber matting, a no-drill mounting kit and our weather resistant design.



TOOL BOXES & ACCESSORIES



ICONIC METALGEAR

HIGH SIDE PICKUP TRUCK TOOLBOXES

Finally, heavy-duty high side pickup truck toolboxes that won't dent when you look at them. Built with Iconic Metal Gear's standard strong, lightweight aluminum, we have created the toughest high side pickup truck toolboxes that also won't weigh your truck down. Also featuring our 5/8" thick automotive bulb seal, rain gutter style door frame, stainless keyed and pad-lockable handles and flip down doors. You can hand these toolboxes down to your grandkids, they're built that tough.



NOTES

Dotted lines for note-taking.

NOTES

Dotted lines for note-taking.



TRUCK EQUIPMENT SOLUTIONS



UPFITTING, SERVICE AND DISTRIBUTION PHONE NUMBERS

/ Toronto (H.O.)	TEL 905.564.5800	/ Moncton	TEL 506.388.3465
/ Etobicoke	TEL 416.619.1573	/ Morden	TEL 204.201.1197
/ Newmarket	TEL 289.453.1090	/ Winnipeg	TEL 204.201.1036
/ Tillsonburg	TEL 519.842.7200	/ Regina	TEL 306.359.3677
/ Windsor	TEL 519.727.4398	/ Edmonton	TEL 780.960.6826
/ Ottawa	TEL 613.691.4196	/ Calgary	TEL 403.720.8033
/ Montréal	TEL 514.856.0407	/ Vancouver	TEL 604.888.4464
/ Laval	TEL 514.519.0367	/ Elkhorn	TEL 262.723.7914
/ Halifax	TEL 902.468.8288		



POWER BEYOND

driveproducts.com



ISO Certified by an Accredited Registrar • National Safety Mark Approval • ©Drive Products 2022
Drive Products reserves the right to make changes in specifications, packages, or to discontinue options without notice at any time.