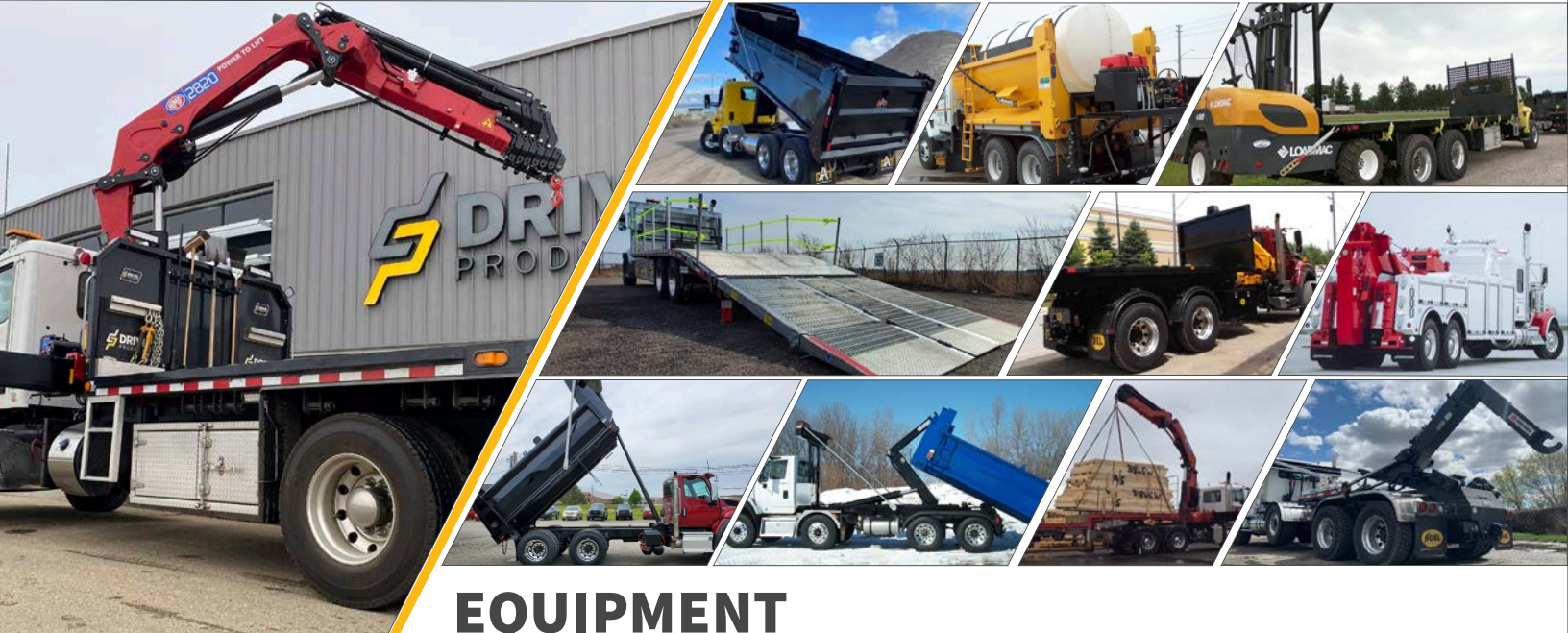


SOLUTIONS BY MARKET



POWER BEYOND / HEAVY TRUCKS



EQUIPMENT

MATERIAL SPREADERS • CRANES & STABILIZERS • HOOKLIFTS • FLAT DECK • DUMP BODY* • BEAVERTAIL • ROLL-OFFS* • LIFT GATES • TOW HEAVY WRECKERS, CARRIERS & ROTATORS • PLOWS • SNOW & ICE EQUIPMENT • WINCH TRACTOR*

/ VENDOR PARTNERS



*SOME PRODUCTS AND BRANDS ARE AVAILABLE IN SPECIFIC REGIONS ONLY.



BULK TRANSPORT & WETLINE KITS

BLOWERS • PRODUCT PUMPS • COMPRESSORS
WETLINE KITS: LOWBOY • GOOSENECK • CUSTOM/SPECIALIZED TRAILER APPLICATIONS
- END DUMP • LIVE BOTTOM • FLOAT GOOSENECK • WALKING FLOOR

/ VENDOR PARTNERS

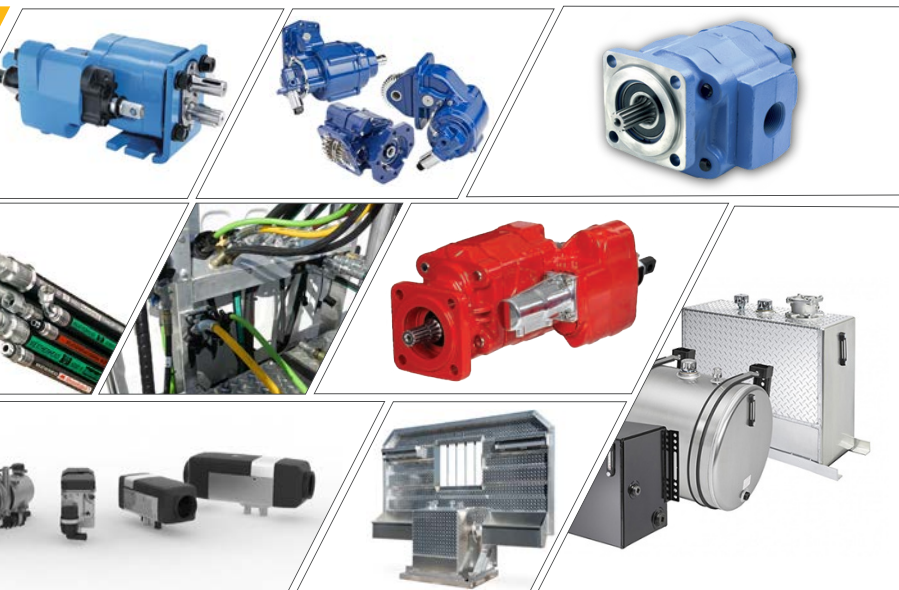




DRIVELINE & CONTROLS

REMOTE CONTROLS • PNEUMATIC CONTROLS • ELECTRONIC CONTROLS • CUSTOM CONSOLE • CABLE CONTROLS

/ VENDOR PARTNERS



PARTS DISTRIBUTION

REMOTE CONTROLS • PNEUMATIC CONTROLS • ELECTRONIC CONTROLS • CUSTOM CONSOLE • CABLE CONTROLS
• HYDRAULIC TANKS/RESERVOIRS • HYDRAULIC PUMPS • HYDRAULIC MOTORS • HYDRAULIC HOSE & FITTINGS •
HYDRAULIC FILTERS • HEATING & COOLING • COUPLINGS, MOUNTS & MANIFOLDS

/ VENDOR PARTNERS



MANUFACTURING



TILLSONBURG

EXPANSION PROGRESS



MORDEN

EXPANSION PROGRESS



Our facilities follow strict quality guidelines required in ISO certification or equivalent accreditation. Our manufacturing process is robust and follows rigorous quality testing and welding practices on every component of truck bodies, and equipment that we build. In combination with our engineers, skilled trade employees and cutting-edge technology (laser, punching, CNC milling, CNC press brake, manual and robotic welding, zinc plating, e-coat, wet paint and powder coat). Drive Products – Manufacturing Division is set to meet the demands of North American market.

A map showing the borders of Canada and the United States of America. The Canadian provinces and territories are labeled: Yukon, Northwest Territories, Nunavut, British Columbia, Alberta, Saskatchewan, Manitoba, Ontario, Quebec, New Brunswick, Nova Scotia, and Newfoundland and Labrador. The United States is labeled with its state abbreviations. The map is titled 'CANADA' and 'UNITED STATES OF AMERICA' with their respective flags.

| | | | |
|-------------------------|-------------------------|----------------------|-------------------------|
| / Toronto (H.O.) | TEL 905.564.5800 | / Mount Pearl | TEL 709.753.0984 |
| / Etobicoke | TEL 416.619.1573 | / Morden | TEL 204.201.1191 |
| / Tillsonburg | TEL 519.842.7200 | / Winnipeg | TEL 204.201.1036 |
| / Windsor | TEL 519.727.4398 | / Regina | TEL 306.359.3677 |
| / Ottawa | TEL 613.691.4196 | / Edmonton | TEL 780.960.6826 |
| / Montréal | TEL 514.856.0407 | / Calgary | TEL 403.720.8033 |
| / Laval | TEL 514.519.0367 | / Vancouver | TEL 604.888.4464 |
| / Halifax | TEL 902.468.8288 | / Elkhorn | TEL 262.723.7914 |
| / Moncton | TEL 506.388.3465 | / Winters | Coming Soon |



ISO Certified by an Accredited Registrar • National Safety Mark Approval • ©Drive Products 2022
Drive Products reserves the right to make changes in specifications, packages, or to discontinue options without notice at any time.