

KARGO KING 2PL Roll off System

# cSevenSeries

Model **RS-20-160-18**

RENTAL SYSTEM



**KARGO KING**  
ROLL-OFF SYSTEMS



- Sub-frame Length = 16' / 4.8 m
- Deck Length = 18' / 5.4 m
- Lift Capacity = 24,000 lbs / 10,886 kg

## TAKING SAFETY TO A NEW LEVEL. GROUND LEVEL.

### SAFETY FIRST

The Kargo King Rental System is a truck mounted roll off system specifically designed and engineered to meet the unique demands of present day rental equipment fleets. Over the past twenty years the number of rental equipment pieces introduced to market has increased dramatically in both volume and complexity. This increase has brought with it numerous challenges related to safe loading and transport of rental equipment. Be it small compaction equipment, scissor lifts or aerial devices, each piece of equipment presents its own potential safety concerns. The Kargo King Rental System addresses these concerns by design!



### KEY FEATURES

#### DESIGNED FOR CLASS 7 / 18T TRUCKS

- The Kargo King C7 Series is designed for Class 7 / 18T Truck applications with all of the features that have made the Kargo King the system of choice for Rental/Hire fleets globally.
- Payload Capacity = 20,000 lbs / 9.0 T will give Hire/Rental fleets another tool in their fleet to address increasing demand for payload as trucks & rental equipment gets heavier



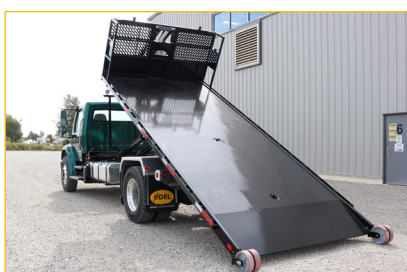
#### LEAGUE OF ITS OWN

- The Kargo King 2PL (2 Point Latching) design allows for Truck Bed to sit nearly flush to the truck frame. It's not a hooklift!
- The Kargo King sits 6" to 8" (152.4mm to 203.2mm) lower than rail based systems = lower vertical center of gravity and greater stability
- The Kargo King is supported by frame across width of the deck, front and back
- The Beavertail at rear of Deck is 8 degrees. Purposefully shallow and short slope to accommodate low clearance equipment (e.g. scissor lifts)
- The system is designed for the hire/rental industry as opposed to tow or waste



#### ADDITIONAL UNIQUE FEATURES

- Dock Leveler
- Removable Winch (disabled load only). Not for pulling equipment vertically up a ramp. The Kargo King designed to load/unload at ground level
- Removable Wheels/Casters.
- Interchangeable Decks.
- Decks designed with Tie Downs & Chain Holders specifically included for Rental/Hire applications.



#### TARGET TRUCK SPECIFICATIONS

- Designed for class 7 trucks
- Single Axle
- Air Brake
- Front Axle: 14,000 lbs. / 6.3 tonnes
- Rear Axle: 23,000 lbs. / 10.43 tonnes
- CA 144" / 3.6m to 156" / 3.9m)

#### TARGETED SPECIFICATIONS

- Payload Capacity on the deck 20,000 lbs. / 9.0 T (Excludes estimated deck weight of 4,000 lbs./ 1,814 kg)
- Subframe = 16' / 4.87 Meters
- Deck Length = 18' / 5.4 Meters
- Frame to deck floor measurement = 13.25" / 25.4 mm
- Working Pressure = 3000 PSI / 206.84 Bar
- Dual Cylinder
- Features and options equivalent to cSix models

\*Images are for demonstrative purposes only, subject to change without notice, contact us for more information.