



# TRUCK EQUIPMENT SOLUTIONS



F O R D T R U C K S

# TABLE OF CONTENTS

|  |    |
|--|----|
| About Us.....                                | 1  |
| North American Footprint .....               | 2  |
| Chassis Pool Stock Special.....              | 4  |
| Dump Body Pick Up Insert.....                | 5  |
| Landscape Dump Bodies.....                   | 6  |
| Boxe Delete.....                             | 7  |
| Chipper Bodies.....                          | 8  |
| Flat Deck Body (Fixed & Dumping).....        | 9  |
| Roll-Off System                              |    |
| cTwo Rental Series .....                     | 10 |
| cFive & cSix Detachable Series .....         | 11 |
| cSix Rental or Lumber Series.....            | 12 |
| Hooklifts .....                              | 13 |
| Cranes .....                                 | 14 |
| Carriers & Wreckers.....                     | 16 |
| Pressure Trucks .....                        | 17 |
| Service Bodies.....                          | 18 |
| Aerials .....                                | 19 |
| Liftgates.....                               | 20 |
| Snow Removal/Ice Control .....               | 21 |
| Liquid Application/Electronic Controls ..... | 22 |
| Onboard Air Compressors .....                | 23 |
| Van Shelving for Ford Transit.....           | 24 |
| Fleetside .....                              | 25 |
| Toolboxes and accessories .....              | 26 |



# ABOUT US

## THE BEGINNING

Recognizing a need for industry specialists, Greg Edmonds established Drive Products in 1983 to supply products and systems to the Truck Mounted Equipment industry in Ontario. The foundation was set with a leased 3,000 sq.ft. building in Toronto, three employees, and \$100,000 starting inventory. Drive Products' success continued in the form of exponential growth with help from partners with a wealth of knowledge and experience who shared a common vision. Operations were expanded through the addition of branch locations and the integration of driveline and cable manufacturing. The company strengthened its market position by securing an exclusive distribution arrangement with Muncie Power Products and by acquiring additional complimentary product lines.

## DRIVE PRODUCTS TODAY

Drive Products continues to operate as a family-owned business with Robert Edmonds in the main leadership role as President. Drive Products now offers a complete range of truck mounted equipment, products, services and solutions through a growing branch and partner network across North America. Drive Products has continued to build on its diversification strategy centered around strong distribution, systems integration, upfitting and manufacturing capabilities. Most recently, Drive Products has established its position as a leader of truck equipment manufacturing in Canada with the additions of premium truck equipment manufacturers Kargo King Roll Off Systems (2013), Voth Truck Bodies (2014), Snowbull Tractor Plows (2017), G.W. Anglin (2019) and Del Equipment (2020), Tradesman Toolboxes & Tanks (2022), and ORO Design (2023).

## DRIVE PRODUCTS TOMORROW

Drive Products will continue its commitment to providing premium solutions, products and services across North America with the best people in the industry. Expansions into the USA with Texas and Wisconsin facility along with a growing distribution network, Drive Products is now uniquely positioned to provide regional and national fleets with the full range of upfitting services from Light Truck & Van to Class 8 Heavy Truck. Drive Products will continue to seek opportunities and improve capabilities with the goal of adding increased value to our customers into the years to come.

## OUR MISSION

Providing premium quality solutions, products and services from  
the best people in the industry

## CORE VALUES

**INTEGRITY**

**RESPONSIVENESS**

**QUALITY FOCUSED**

**PASSIONATE**

# NORTH AMERICAN FOOTPRINT

(TOTAL AREA: 900,000 SQ.FT.+)





**VANCOUVER**

**Address:** 19150 96 Ave #1,  
Surrey, BC  
**Building Size:** 29,000 sq. ft.  
**Shop Sq. Ft.:** 28,000 sq. ft.

**EDMONTON**

**Address:** 26230 Township Rd  
531A #111, Acheson, AB  
**Building Size:** 90,000 sq. ft.  
**Shop Sq. Ft.:** 40,000 sq. ft.

**CALGARY**

**Address:** 4311 122 Ave SE,  
Calgary, AB  
**Building Size:** 30,246 sq. ft.  
**Shop Sq. Ft.:** 12,000 sq. ft.

**REGINA**

**Address:** 338 Mill St.  
Regina, SK  
**Building Size:** 15,000 sq. ft.  
**Shop Sq. Ft.:** 13,000 sq. ft.

**WINNIPEG**

**Address:** 10 Keenleyside St.,  
Winnipeg, MB  
**Building Size:** 23,000 sq. ft.  
**Shop Sq. Ft.:** 10,000 sq. ft.

**MORDEN UPFITTING**

**Address:** 480 9th St. South,  
Morden, MB  
**Building Size:** 14,500 sq. ft.  
**Shop Sq. Ft.:** 9,500 sq. ft.

**MORDEN - MANUFACTURING FACILITY**

**Address:** 72 Jefferson St.,  
Morden, MB  
**Building Size:** 56,000 sq. ft.  
**Shop Sq. Ft.:** 40,000 sq. ft.

**TILLSONBURG - VOTH MANUFACTURING/UPFITTING**

**Address:** 66 Norfolk County Rd 13,  
Courtland, ON  
**Building Size:** 100,000 sq. ft.  
**Shop Sq. Ft.:** 100,000 sq. ft.

**WINDSOR - GWA MANUFACTURING**

**Address:** 220 Patillo Rd RR#1  
Tecumseh, ON  
**Building Size:** 80,000 sq. ft.  
**Shop Sq. Ft.:** 70,000 sq. ft.

**OTTAWA**

**Address:** 1611 Liverpool Crt.,  
Ottawa, ON  
**Building Size:** 25,116 sq. ft.  
**Shop Sq. Ft.:** 21,000 sq. ft.

**MISSISSAUGA - HEAD QUARTERS & GLOBAL DISTRIBUTION CENTRE**

**Address:** 1665 & 1666  
Shawson Dr. Mississauga, ON  
**HQ & ON Service Centre Bldg**  
**Size:** 77,000 sq. ft.  
**Shop Sq. Ft.:** 20,000 sq. ft.  
**Global Distribution Centre Bldg**  
**Size:** 71,600 sq. ft.

**ETOBICOKE - GWA UPFITTING FACILITY**

**Address:** 10 McLachlan Dr.,  
Etobicoke, ON  
**Building Size:** 38,000 sq. ft.  
**Shop Sq. Ft.:** 20,000 sq. ft.

**Central ONTARIO - ORO DESIGN & MANUFACTURING**

**Address:** 3 Small Crescent, Oro-  
Medonte, ON  
**Building Size:** 32,000 sq. ft.  
**Shop Sq. Ft.:** 24,000 sq. ft.

**Niagara**

**Address:** 620 Welland Ave #626,  
St. Catharines, ON  
**Building Size:** 10,000 sq. ft.  
**Shop Sq. Ft.:** 10,000 sq. ft.

**MONTREAL**

**Address:** 900 Montée de Liesse,  
St-Laurent, QC  
**Building Size:** 26,524 sq. ft.  
**Shop Sq. Ft.:** 5,000 sq. ft.

**LAVAL - GWA/AMTECH UPFITTING FACILITY**

**Address:** 3737 Boulevard Lite,  
Laval, QC  
**Building Size:** 67,000 sq. ft.  
**Shop Sq. Ft.:** 50,000 sq. ft.

**MONCTON**

**Address:** 541 Ferdinand Blvd.,  
Dieppe, NB  
**Building Size:** 9,600 sq. ft.  
**Shop Sq. Ft.:** 5,000 sq. ft.

**HALIFAX**

**Address:** 50 Joseph Zatzman Dr.,  
Dartmouth, NS  
**Building Size:** 7,155 sq. ft.  
**Shop Sq. Ft.:** 4,000 sq. ft.

**HALIFAX - RENTAL/TRUCK & UTILITIES**

**Address:** 55 Isnor Dr Dartmouth,  
NS  
**Building Size:** 14,000 sq. ft. **Shop**  
**Sq. Ft.:** 12,000 sq. ft.

**ST. JOHN'S**

**Address:** 30 Edmons place  
St. John's, NL  
**Building Size:** 17,500 sq. ft **Shop**  
**Sq. Ft.:** 10,000 sq. ft.

**ELKHORN**

**Address:** 977 Koopman Ln,  
Elkhorn, WI  
**Building Size:** 20,000 sq. ft.  
**Shop Sq. Ft.:** 14,000 sq. ft.

**WINTERS**

**Address:** 305 N Frisco St.  
Winters, TX  
**Building Size:** 120,000 sq. ft.  
**Shop Sq. Ft.:** 100,000 sq. ft.

# CHASSIS POOL STOCK

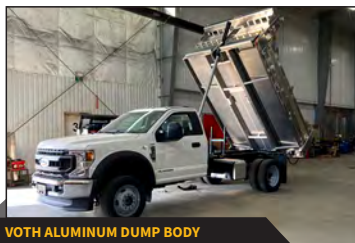


## DRIVE PRODUCTS IS CANADA'S LARGEST AUTHORIZED FORD CHASSIS POOL STOCK ACCOUNT AND APPROVED MODIFIER

Drive Products stocks light duty and medium duty cab and chassis and transit vans. We work with local Ford truck dealerships to bring Work Ready trucks to market.



JERRDAN 22' CARRIER



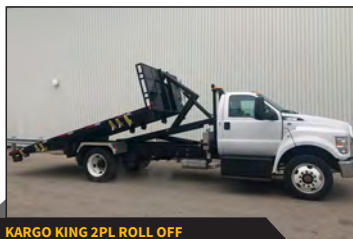
VOTH ALUMINUM DUMP BODY



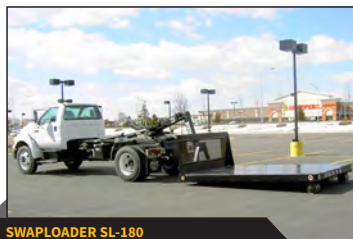
VOTH GALVANIZED DUMPING LUMBER DECK



16' VOTH STEEL FLAT



KARGO KING 2PL ROLL OFF



SWAPLOADER SL-180



DURALIFT AERIAL

# LANDSCAPE DUMP BODIES



## STEEL, HYBRID (STEEL BODY AND ALUMINUM GATES) & ALUMINIUM

From Light Duty to Contractor Grade Landscape Dump Bodies, Drive Products offers a wide range of models that are boldly designed and manufactured for maximum durability based on today's demanding applications. All Landscape Dump Bodies are built with precision to provide superior service and reliability and are backed by an industry leading warranty.

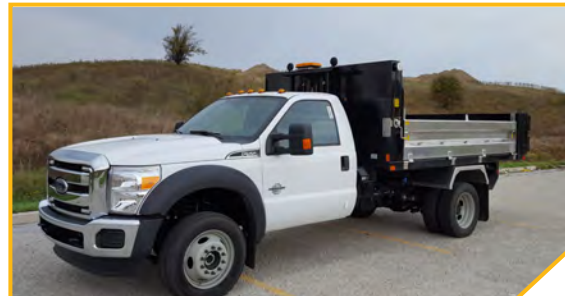
### AVAILABLE LENGTHS

- 9'9" (2170lbs, 2.6 cubic yards, 7 ton hoist)
- 11'9" (2410lbs, 3.7 cubic yards, 7 or 12 ton hoist)
- 12'9" (2641lbs, 4.1 cubic yards, 7 or 12 ton hoist)
- 13'9" (2819lbs, 4.4 cubic yards, 12 ton hoist)

### STEEL



### HYBRID



### ALUMINIUM





# DUMP BODY PICK UP INSERT



## STEEL & ALUMINIUM

Voth Dump Body Pick Up Truck Inserts are custom designed for 1/2 , 3/4 and 1 ton short or long pickups.



## PRODUCT INFORMATION:

- Landscape style
- Steel or Aluminium
- Twin Cylinders allow for lower mounting and higher lifting capacities
- 12V Single pump power back



# BOX DELETE



## 8'5" ALUMINUM UNIBODY DUMPY BODY

### STANDARD FEATURES INCLUDE

- UNDERSTRUCTURE: UNIBODY
- RECOMMENED CA: 56" CA (8' BOX DELETE)
- CHASIS INFO: 2023+ F250 (SRW)
- HEADBOARD HEIGHT OPTIONS: 50"
- FOLDING SIDE WALLS HEIGHT OPTIONS: 15"
- FOLDING SIDES: 15"
- CYLINDER OPTIONS: SCISSOR LIFT - RATING TBD
- TARP SYSTEM OPTIONS: MANUAL CRANK
- TALIGATE HEIGHT OPTION: 21"
- FOLDING SIDE MATERIAL: 1/8" 3003
- TALIGATE MATERIAL: 1/8" 3003
- HEADBOARD MATERIAL: 1/8" 3003"
- FLOOR MATERIAL: 3/16" 5052
- REAR LIGHTING: 4-STT, 2 REVERSE, 5 MARKER, 2
- WEIGHT RANGE: 972LBS
- DUMP ANGLE: 450



# CHIPPER BODIES



## ALUMINUM

Voth Aluminum Chipper Bodies are made for heavy duty service and are custom designed according to customer needs and specifications.





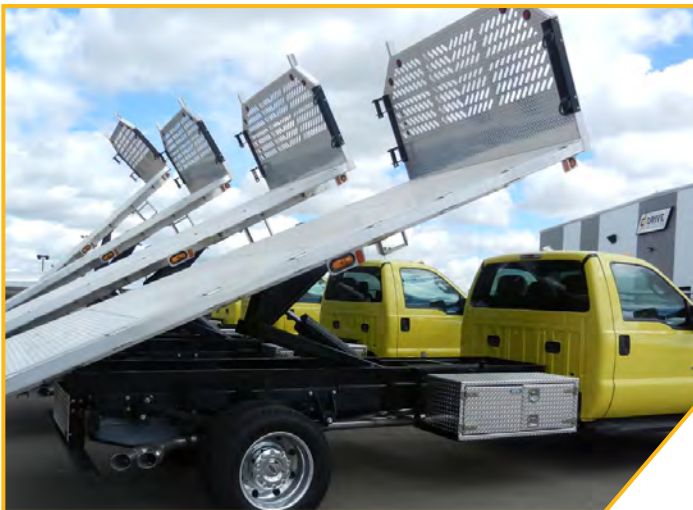
# FLAT DECK BODIES - FIXED & DUMPING



**STEEL, GALVANIZED OR ALUMINUM WITH APITONG WOOD/ OR STEEL TOPS**

Voth Flat Decks and Dumping Flat Decks are custom built to your specifications.

Available in Lengths from 8' to 26'





# ROLL OFF SYSTEM



## KARGO KING cSIX, cFIVE and cTWO RENTAL SERIES

Designed specifically for the needs of Equipment Rental fleets, the Kargo King Rental Deck is designed to accommodate low clearance equipment with its signature beavertail, making the loading and unloading of scissor lifts and compaction equipment safe and efficient. Unlike traditional hook lift systems, Kargo King's locking mechanism design means the Rental Deck sits lower at ground level with gradual incline to accept specialized equipment.



# ROLL OFF SYSTEM



## KARGO KING cFIVE & cSIX DETACHABLE SERIES

The Kargo King Detachable System allows business owners and fleet managers to think and act differently! This one-of-a kind truck mounted roll off system was designed with the idea that contractors often need their trucks for more than one job type. By permanently mounting a truck body onto truck chassis', business owners tie up valuable working capital when these same truck bodies can be interchanged at a fraction of the overall cost. The Kargo King DS is the comprehensive solution for business owners and fleet managers who wish to reduce capital expenditures (truck purchases) and decrease expenses (maintenance, insurance and fuel) related to their truck fleet.





# ROLL OFF SYSTEM



## KARGO KING cSIX RENTAL OR DETACHABLE SERIES

The Kargo King Rental System (RS) is a truck mounted roll off system specifically designed and engineered to meet the unique demands of present day rental equipment fleets. Over the past twenty years the number of rental equipment pieces introduced to market has increased dramatically in both volume and complexity. This increase has brought with it numerous challenges related to safe loading and transport of rental equipment. Be it small compaction equipment, scissor lifts or aerial devices, each piece of equipment presents its own potential safety concerns. The Kargo King RS addresses these concerns by design!





# HOOKLIFTS

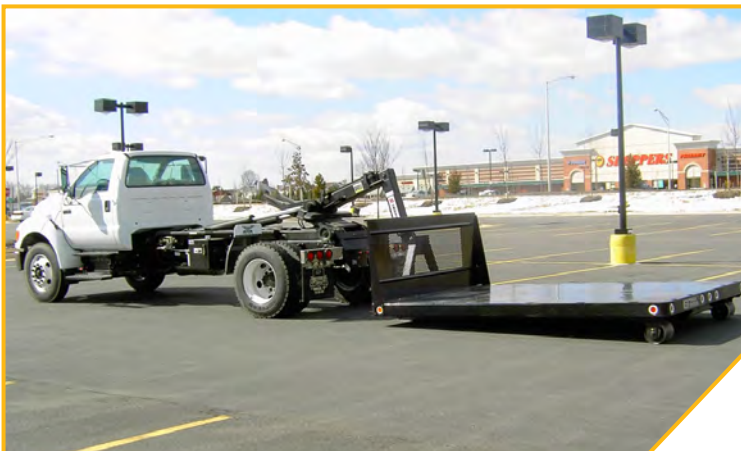


## SWAPLOADER

We are pleased to announce that Drive Products is now a distributor for the SwapLoader line of hooklift products in Canada. SwapLoader is a leading manufacturer of truck mounted hooklifts for waste, government, and contractor markets across North America.

Drive Products will inventory, distribute and upfit SwapLoader hooklifts at each of our locations across Canada. Building on our strength as a systems integrator and truck body manufacturer, Drive Products will also support the distribution of SwapLoader in Canada through the manufacturing of interchangeable truck bodies at Voth Truck Bodies manufacturing facility in Tillsonburg, ON.

We look forward to the opportunity to build upon SwapLoader's strong history in Canada, bringing their product line to our Drive Products customers nationwide through our upfitting shops and distribution network.



# KNUCKLEBOOM CRANES



## HMF

HMF Cranes are the most compact and lightweight cranes on the market. Ideal for Ford's light duty and medium duty chassis, offering an increase in payload capacity with the best lift to weight ratio.





## TELESCOPIC/SERVICE CRANES/MECHANICS TRUCKS



Light and compact cranes for light duty or medium applications often utilized for in-field/mobile service work but versatile enough to for other special applications.





# CARRIERS & WRECKERS

**JERR-DAN**

## 6 TON XLP CARRIER FOR FORD F550/F650 CHASSIS

When it comes to the Jerr-Dan 6 Ton XLP, there's no need to invest in costly chassis modifications, as this carrier—equipped with a 20' deck—is now available for the Ford F550/F650 chassis



## STANDARD-DUTY WRECKERS

Jerr-Dan's **MPL-NG series** delivers unrelenting performance, thanks to its modular aluminum body and our patented Underlift Level Stop Assist System, which prevents wasting precious set-up time. Jerr-Dan's patented LOCKLINK® mechanism locks wheel-retaining arms in the full tire engaged position. The Negative Tilt Feature on the wheel lift is perfect for vehicles in parking ramps and the 4-1/2" high hydraulic crossbar, with 4,000 lb. capacity, assures clearance for even the lowest profile vehicles. The body has a clear deck top and offers more space for storage, while the headboard provides great visibility. The hydraulic valve on the MPL-NG is positioned for easier servicing to get you on the road and back in business faster.

When value and performance matter, look no further than the steel body **MPL-NGS** by Jerr-Dan. Our Negative Tilt Feature on the wheel lift is perfect for repossessing vehicles in parking ramps, and its 4-1/2" high hydraulic crossbar, with 4,000 lb. capacity, assures clearance for even the lowest profile vehicles. Jerr-Dan's patented Underlift Level Stop Assist System gets you set up quicker so you can get in and get out fast, while our patented LOCKLINK® mechanism locks wheel-retaining arms in the full tire engaged position. The body has a clear deck top and offers more space for storage, and the headboard provides great visibility. You'll find the hydraulic valve on the MPL-NGS is positioned for easier servicing, to get you on to your next job quicker.





# PRESSURE TRUCKS

## DRIVE PRODUCTS

Drive Products specializes in custom built pressure trucks from one-ton to tandem and tri-axle applications. We offer a full line of pumps from 50hp to 600hp.





# SERVICE BODIES



## VOTH STEEL AND ALUMINUM

Voth's all aluminum service body is manufactured in rugged, corrosion-resistant 5052-H32 marine grade aluminum. Heavy gauge construction provides additional strength, reducing maintenance and maintaining improved fuel efficiency and payload capacity at 45% lighter than steel.

The trusted high strength performance of your standard service body is now a multi-function truck to suit your industry. Rear cabinet crane reinforcement, specialized cabinetry and a durable powder coat finish will support you wherever your work takes you.





# AERIALS



## VERSALIFT

Versalift distributes aerial lifts and builds partnerships with fleet customers. As well as ensuring all bucket trucks, digger derricks, and cable placers are all safe, reliable, and of upstanding quality.

## DURALIFT

Telescoping aerial lifts that help you work beyond your limits. Equipped with material handling, and some of the highest working heights in the industry.



# LIFTGATES



Liftgate systems supported by Drive Products are cost-efficient market leaders in the pick-up, medium duty and heavy-duty truck markets. Reliability and versatility are offered with liftgates for general transportation and the municipal sector. All liftgates are multi-functional workhorses in the standard design or fitted with some of our many options. From personal to commercial and industrial use, Drive Products offers a range of Liftgates to suit the needs of the customer.

## MAXON

All of Maxon's Me2 C2 liftgates are built with high performance and low maintenance in mind. An oversized, fully enclosed pump and motor assembly helps ensure increased life and less potential for downtime, while maintenance-free, grease-free bearings reduce the need for service. A timed toggle control prevents unauthorized use, automatically deactivating 90 seconds after operation.

## TOMMY GATE

Tommy Gate offers a full line of liftgates for any personal, commercial, or industrial application. Depending on your particular cargo-handling needs and your vehicle, certain liftgates may be more suitable than others.

## WALTCO

A WALTCO liftgate is the ultimate reliable and steady partner that will elevate your business productivity. Leading technology and quality performance will help to unlock the full potential of your load handling operations. Smart solutions help to maximise uptime while keeping both the operator and the working environment safe. From purchase through to after sales service and maintenance, the total cost of ownership of a WALTCO liftgate pays dividends for your business. All backed up by guaranteed service kits and after-sales care.





# SNOW REMOVAL/ICE CONTROL



## DRIVE PRODUCTS

Western Products are the leading manufacturer of snow and ice control products, with a full line of CONTRACTOR GRADE® snow plows for commercial snow plowing as well as personal-use and light municipal snow removal operations.

Western Products also offers a variety of hopper and tailgate-mounted ice control sand and salt spreaders, along with a wide selection of performance-enhancing snow plow and spreader accessories and parts.







# LIQUID APPLICATION/ ELECTRONIC CONTROLS

## FORCE AMERICA

### CRITICAL SPOT SPRAYER, AI200

Our Critical Spot Sprayer assembly is designed for light-to-medium duty truck applications. Featuring stainless steel spray bars and extra high strength U.V. stabilized tanks. The Critical Spot Sprayer is capable of accurately applying liquids of all specific gravities. The Critical Spot Sprayer is ideal for parking lots, sidewalks, bridges and intersection de-icing and anti-icing applications.

### TURN-KEY SYSTEM

Ready for use, no assembly needed in 200, 300, 400 and 500 gallon systems.

### NO TRANSFER OR PUMPING STATIONS REQUIRED

Standard system includes integrated liquid loading, unloading and transfer functions.

### ULTRA-COMPACT DESIGN

Revolutionary design allows easy transfer between all standard pick-up bodies and flatbeds.

### UNIQUE SPRAY BAR STORAGE AND MOUNTING

Complete adaptability allows users to go from storage to use in seconds with exclusive receiver hitch-style mounting system.

### OPTIONAL HERBICIDE SPRAY BAR

Adds multi-use functionality to your system-use year round.



## SSC3100 SPREADER CONTROL



- Compact design at 4.46" H x 6.09" W x 2.75" D
- LEDs around the dial illuminate numbers as rates increase
- Simple calibration mode for adjusting minimums and maximums
- Control liquids independently of granular for direct liquid applications using the dedicated liquid dial
- Fuse accessible from the outside of the controller
- One simple harness for effortless installation
- Fully adjustable mounting option for easy, customizable installation

# ONBOARD AIR COMPRESSORS



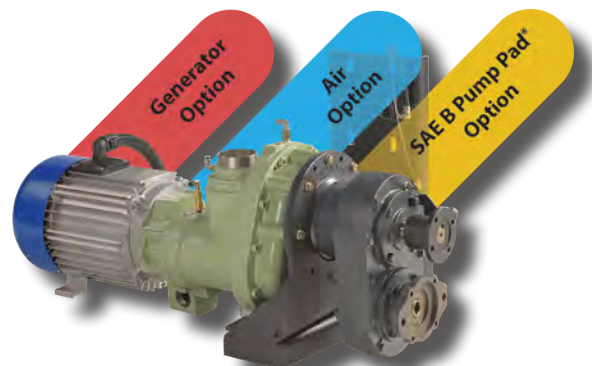
## VANAIR & VMAC MOBILE SOLUTIONS

### PTO SHAFT & HYDRAULIC DRIVEN UNDERDECK MODULAR SYSTEMS

Utilizing the FORD®'s own engine for power, Vanair underdeck rotary screw compressor systems provide you with the exceptional power your crew needs to get the job done where and when they need it - without hauling an expensive air compressor tow-behind. Using a single PTO opening, these systems provide up to 185 CFM\* of impressive air power, AC power or hydraulics, or any combination of all three. At half the cost of a tow-behind, PTO underdeck systems mount seamlessly out of sight, under the vehicle, leaving the towing hitch free for other equipment and opens up the truck bed for additional storage space.



|  |                  |  |                                |
|--|------------------|--|--------------------------------|
| <b>UDSM</b><br>Air Only                  | PTO Shaft Driven | AP (CFM)<br>42, 65, 125, 160, 185 or 300     | HP (HP)<br>100, 150            |
|  | Hydraulic Driven | AP (CFM)<br>60, 85, 125, 160 or 185          | HP (HP)<br>100, 150            |
| <b>Xcite™</b><br>Generator Only          | PTO Shaft Driven | Output (kW)<br>4.8, 11.1, 18.8, 24 or 23     | Voltage<br>120V or 240VAC      |
|  | Hydraulic Driven | Output (kW)<br>6.5, 13.5, 24.5, 33, 42 or 33 | Voltage<br>Other Available     |
| <b>Genair®</b><br>Air & Generator        | PTO Shaft Driven | AP (CFM)<br>125, 160 or 185                  | Output (kW)<br>9.8 or 9.8      |
|  |                  | HP (HP)<br>150-150                           | Voltage<br>120 or 240VAC       |
| <b>V2™</b><br>Air & Hydraulic            | PTO Shaft Driven | AP (CFM)<br>125, 160 or 185                  | SAE B Pump Pad*<br>77 FL. Lbs. |
|  |                  | HP (HP)<br>150-150                           |                                |
| <b>V3™</b><br>Air, Generator & Hydraulic | PTO Shaft Driven | AP (CFM)<br>125, 160 or 185                  | Output (kW)<br>4.8 or 9.8      |
|  |                  | HP (HP)<br>150-150                           | Voltage<br>120 or 240VAC       |
|  |                  |  | SAE B Pump Pad*<br>77 FL. Lbs. |





# VAN SHELVING

## VOTH, GWA, ADRIAN STEEL FOR FORD TRANSIT

Build your fleet for success with Voth's line of standard van shelving and accessories. Created with the Ford Transit in mind, select the solutions to keep your business on the go with shelving, tool racks and cabinetry to keep your crew working safe and secure on the road.



# FLEETSIDES



## ORO ACCESSORIES

From the first concept sketch in the office to the last nut and bolt on a finished service body, an ORO service truck incorporates over three decades of design and manufacturing experience into one robust platform. We maximize the limited space in a service body by incorporating deeper cabinets, multi-functional storage solutions and innovative design features to help store the right parts and components for any job; broadening the capabilities of service technicians and making them more efficient on the jobsite. By starting with a standard platform and customizing the options based on specific site requirements, we're ensuring the best solutions for even the most unique field service challenges.





# TOOL BOXES & ACCESSORIES



## TRADESMAN

### CROSS BED BOXES

Tradesman offers secure and convenient truck bed storage solutions for everyday use. Cross Bed boxes are constructed from aluminum diamond plate or steel for strength and durability.

### SIDE MOUNT BOXES ALUMINUM & STEEL

Side Mount boxes install along truck bed rail allowing for full view of the road, and convenient storage and access to tools and equipment.

The side mount box features an sturdy paddle handle or push button opening, as well as weather-tight gaskets to keep moisture, dirt, and debris out. It is available in heavy-duty 22-gauge steel or aluminum, diamond plate construction. Fits full or mid-size trucks. Limit



### GULLWING TOOLBOX

Tradesman Gull Wing Boxes provide secure and convenient truck bed storage solutions for everyday use. Gull Wing Boxes are constructed from an aluminum diamond plate or steel for strength and durability. Boxes are equipped with weatherproof gaskets creating a tight seal to keep out moisture and dirt. Boxes also contain self-rising gas cylinders to keep lid open. Boxes are equipped with a locking mechanism to keep your tools and equipment secure.



# TOOL BOXES & ACCESORIES **TRADESMAN**

## TRADESMAN

### LIQUID STORAGE TANKS

Tradesman tanks offer a safe, convenient way to transport liquids. Each tank is hand-welded for strength, durability, and reliability. Available in heavy-duty AL.100TB aluminum, tank capacities range from 30 to 100 gallons.





# NOTES

A series of horizontal dotted lines for taking notes.

# NOTES

Dotted lines for writing notes.





**DISTRIBUTION + MANUFACTURING PHONE NUMBERS**

- |                   |                  |              |                  |
|-------------------|------------------|--------------|------------------|
| / Toronto (H.O.)  | TEL 905.564.5800 | / Moncton    | TEL 506.388.3465 |
| / Etobicoke       | TEL 416.679.1573 | / ST. John's | TEL 709.753.0984 |
| / Oro-Medonte     | TEL 705.327.1567 | / Morden     | TEL 204.201.1197 |
| / Niagara         | TEL 905.641.5464 | / Winnipeg   | TEL 204.201.1036 |
| / Tillsonburg     | TEL 519.842.7200 | / Regina     | TEL 306.359.3677 |
| / Windsor         | TEL 519.727.4398 | / Edmonton   | TEL 780.960.6826 |
| / Ottawa          | TEL 613.691.4196 | / Calgary    | TEL 403.720.8033 |
| / Montréal        | TEL 514.856.0407 | / Vancouver  | TEL 604.888.4464 |
| / Laval           | TEL 514.519.0367 | / Elkhorn    | TEL 262.723.7914 |
| / Halifax         | TEL 902.468.8288 | / Winters    | TEL 325-242-5818 |
| / Halifax Utility | TEL 902.468.3788 |              |                  |

ISO Certified by an Accredited Registrar • National Safety Mark Approval • ©Drive Products 2023  
 Drive Products reserves the right to make changes in specifications, packages, or to discontinue options without notice at any time.



**POWER BEYOND**

[driveproducts.com](http://driveproducts.com)

