



TRUCK EQUIPMENT SOLUTIONS

LIGHT & MEDIUM TRUCKS
USA

TABLE OF CONTENTS

About Us.....	1
National Footprint.....	2-3
Manufacturing.....	4
Landscape Dump Bodies.....	5
Chipper Bodies.....	6
Flat Deck Bodies - Fixed & Dumping	7
Service Bodies.....	8
Dump Body Pick Up Insert.....	9
Fleet - Van Shelving.....	10
Roll-Off System	
cTwo Rental Series	11
cFive & cSix Detachable Series	12
cSix Rental or Lumber Series	13
Cranes	14
Pressure Trucks	15
Aerials	16
Snow & Ice Equipment	17
Tradesman Toolboxes & Tanks.....	18

ABOUT US

THE BEGINNING

Recognizing a need for industry specialists, Greg Edmonds established Drive Products in 1983 to supply products and systems to the Truck Mounted Equipment industry in Ontario. The foundation was set with a leased 3,000 sq.ft. building in Toronto, three employees, and \$100,000 starting inventory. Drive Products' success continued in the form of exponential growth with help from partners with a wealth of knowledge and experience who shared a common vision. Operations were expanded through the addition of branch locations and the integration of driveline and cable manufacturing. The company strengthened its market position by securing an exclusive distribution arrangement with Muncie Power Products and by acquiring additional complimentary product lines.

DRIVE PRODUCTS TODAY

Drive Products continues to operate as a family-owned business with Robert Edmonds in the main leadership role as President. Drive Products now offers a complete range of truck mounted equipment, products, services and solutions through a growing branch and partner network across North America. Drive Products has continued to build on its diversification strategy centered around strong distribution, systems integration, upfitting and manufacturing capabilities. Most recently, Drive Products has established its position as a leader of truck equipment manufacturing in Canada with the additions of premium truck equipment manufacturers Kargo King Roll Off Systems (2013), Voth Truck Bodies (2014), Snowbull Tractor Plows (2017), G.W. Anglin (2019) and Del Equipment (2020).

DRIVE PRODUCTS TOMORROW

Drive Products will continue its commitment to providing premium solutions, products and services across North America with the best people in the industry. The 2019 addition of GW Anglin manufacturing and light upfitting is the latest example of our commitment to better serve our customer base in Canada and U.S.A. Drive Products is now uniquely positioned to provide regional and national fleets with the full range of upfitting services from Light Truck & Van to Class 8 Heavy Truck. Drive Products will continue to seek opportunities and improve capabilities with the goal of adding increased value to our customers into the years to come.

OUR MISSION

Providing premium quality solutions, products and services from
the best people in the industry

CORE VALUES

INTEGRITY

RESPONSIVENESS

QUALITY FOCUSED

PASSIONATE

NORTH AMERICAN FOOTPRINT

(TOTAL AREA: 900,000 SQ.FT.+)



CANADA**VANCOUVER**

Address: 19150-96th Ave #1,
Surrey BC V4N 3R3
Phone: 604-888-4464

CALGARY

Address: 4311 122nd, Ave S.E.,
Calgary AB T2Z 4V3
Phone: 403-720-8033

EDMONTON

Address: 11465-259 Street,
Acheson AB T7X 6C4
Phone: 780-960-6826

REGINA

Address: 338 Mill Street,
Regina SK S4K 0A8
Phone: 306-359-3677

MORDEN

Address: 480 9th Street
South, Morden MB R6M 0C3
Phone: 204-201-1197

MORDEN MFG

Address: 72 Jefferson Street,
Morden MB R6M 0B8
Phone: 204-201-1197

WINNIPEG

Address: 10A Keenleyside
Street, Winnipeg MB R2L 2B9
Phone: 204-201-1036

**ETOBICOKE - GW Anglin
Manufacturing**

Address: 10 McLachlan Drive,
Etobicoke ON M9W 1E5
Phone: 416-679-1573

NIAGARA - DP Services

Address: 620 Welland Ave
#626, St. Catharines ON L2M
5V6
Phone: 905-641-5464

**ORO-MEDONTE - ORO Design
& Manufacturing**

Address: 3 Small Crescent,
Township Of Oro-Medonte ON
L0L 1T0
Phone: 705-327-1567

OTTAWA

Address: 1611 Liverpool Court,
Ottawa ON K1B 4L1
Phone: 613-691-4196

**TILLSONBURG -
Manufacturing Division - Voth
Truck Bodies / Kargo King**

Address: 66 Norfolk County Rd
#13, Courtland ON NOJ 1E0
Phone: 519-842-7200

**TILLSONBURG - DP
UPFITTING**

Address: 66 Norfolk County Rd
#13, Courtland ON NOJ 1E0
Phone: 519-842-7200

**TORONTO - Head Office,
Upfitting & Service Centre**

Address: 1665 Shawson Drive,
Mississauga ON L4W 1T7
Phone: 905-564-5800

**TORONTO - Global
Distribution Centre**

Address: 1666 Shawson Drive,
Mississauga ON L4W 1N7
Phone: 416-321-0660

WINDSOR

Address: 220 Patillo Road
RR#1, Tecumseh ON N8N 2L9
Phone: 519-727-4398

**LAVAL - DP Upfitting Shop -
Coming Soon**

Address: 3737 Boulevard Lite
Unit B, Laval QC H7E 4X8
Phone: 514-519-0367

**LAVAL - GW/AMTECH
UPFITTING FACILITY**

Address: 3737 Boulevard Lite,
Laval QC H7E 4X8
Phone: 450-661-6209

**LAVAL - Industrial Driveline
Division**

Address: 3737 Boulevard Lite
Unit A, Laval QC H7E 4X8
Phone: 514-519-0367

MONTREAL

Address: 900 Montee De
Liesse, St. Laurent QC H4T
1N8
Phone: 514-856-0407

ST. JOHN'S

Address: 30 Edmonds Place,
St. John's NL A1B 0C7
Phone: 709-753-0984

MONCTON

Address: 541 Ferdinand Blvd,
Dieppe NB E1A 7G1
Phone: 506-388-3465

HALIFAX

Address: 55 Isnor Drive,
Dartmouth NS, B3B 1N6
Phone: 902-468-8288

USA**ELKHORN - DP USA**

Address: 969 Koopman Lane,
Elkhorn WI 53121
Phone: 262-723-7914

**WINTERS - Manufacturing
Division - Tradesmas**

Address: 305 N Frisco Street,
Winters TX 79567
Phone: 325-812-2260

WINTERS - Upfitting Shop

Address: 305 N Frisco Street,
Winters TX 79567
Phone: 325-812-2260

MANUFACTURING



TILLSONBURG

WINTERS

WINDSOR

MORDEN

Drive Products - Manufacturing Division consists of 5 manufacturing facilities with a combined space of 350,000+ sq.ft of manufacturing space. These facilities manufacture an assortment of truck bodies, truck equipment, and truck accessories for the North American Market. We use high quality steel materials and specialize in premium marine grade aluminum for our truck bodies. Our Canadian facilities are CWB (Canadian Welding Bureau) certified ensuring our manufacturing process maintains the highest level of quality.

Our facilities follow strict quality guidelines required in ISO certification or equivalent accreditation. Our manufacturing process is robust and follows rigorous quality testing and welding practices on every component of truck bodies, and equipment that we build. In combination with our engineers, skilled trade employees and cutting-edge technology (laser, punching, CNC milling, CNC press brake, manual and robotic welding, zinc plating, e-coat, wet paint and powder coat). Drive Products - Manufacturing Division is set to meet the demands of North American market.



LANDSCAPE DUMP BODIES



STEEL, HYBRID (STEEL BODY AND ALUMINUM GATES) & ALUMINIUM

From Light Duty to Contractor Grade Landscape Dump Bodies, Drive Products offers a wide range of models that are boldly designed and manufactured for maximum durability based on today's demanding applications. All Landscape Dump Bodies are built with precision to provide superior service and reliability and are backed by an industry leading warranty.

AVAILABLE LENGTHS

- 9'9" (60" CA)
- 11'9" (84" CA)
- 12'9" (108" CA)
- 13'9" (120" CA)

**FOR FULL DUMP BODY SPECS, REFER TO PRODUCT TEAR SHEETS AVAILABLE ON VOTHTRUCKBODIES.COM

STEEL



HYBRID



ALUMINIUM



CHIPPER BODIES



ALUMINUM

Voth Aluminum Chipper Bodies are made for heavy-duty service, while offering an increased payload and fuel efficiency. The low mounting height allows for a low center of gravity with increased stability on the road and on the job site.

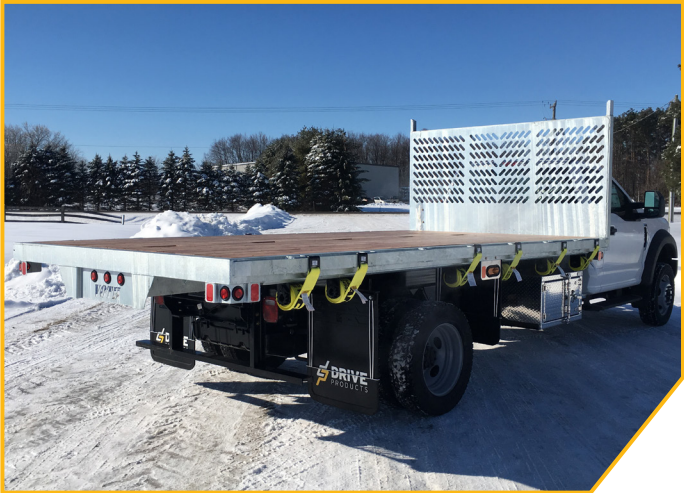




FLAT DECK BODIES - FIXED & DUMPING

STEEL, GALVANIZED OR ALUMINUM WITH APITONG WOOD OR STEEL TOPS

The ideal team member for anyone in the lumber or home building industry, Voth Flat Decks is available in steel, aluminum, or galvanized steel with apitong wood floor. Available in fixed or dumping, make lumber deliveries a breeze with the optional rear roller.



SERVICE BODIES



VOTH STEEL AND ALUMINUM

Voth's all aluminum service body is manufactured in rugged, corrosion-resistant 5052-H32 marine grade aluminum. Heavy gauge construction provides additional strength, reducing maintenance and maintaining improved fuel efficiency and payload capacity at 45% lighter than steel.

The trusted high strength performance of your standard service body is now a multi-function truck to suit your industry. Rear cabinet crane reinforcement, specialized cabinetry and a durable powder coat finish will support you wherever your work takes you.





DUMP BODY PICK UP INSERT

STEEL & ALUMINIUM

Voth Dump Body Pick Up Truck Inserts are custom designed for 1/2 , 3/4 and 1 ton short or long pickups.



PRODUCT INFORMATION:

- Landscape style
- Steel or Aluminium
- Twin Cylinders allow for lower mounting and higher lifting capacities
- 12V Single pump power back

FLEET - VAN SHELVING



VOTH FOR FORD TRANSIT

Build your fleet for success with Voth's line of standard van shelving and accessories. Created with the Ford Transit in mind, select the solutions to keep your business on the go with shelving, tool racks and cabinetry to keep your crew working safe and secure on the road.



ROLL OFF SYSTEM



KARGO KING cTWO RENTAL SERIES

Designed specifically for the needs of Equipment Rental fleets, the Kargo King Rental Deck is designed to accommodate low clearance equipment with its signature beavertail, making the loading and unloading of scissor lifts and compaction equipment safe and efficient. Unlike traditional hook lift systems, Kargo King's 2-point latching mechanism design means the Rental Deck sits lower at ground level with gradual incline to accept specialized equipment.



ROLL OFF SYSTEM



KARGO KING cFIVE & cSIX DETACHABLE SERIES

The Kargo King Detachable System allows business owners and fleet managers to think and act differently! This one-of-a-kind truck mounted roll off system was designed with the idea that contractors often need their trucks for more than one job type. By permanently mounting a truck body onto truck chassis', business owners tie up valuable working capital when these same truck bodies can be interchanged at a fraction of the overall cost. The Kargo King Detachable System is the comprehensive solution for business owners and fleet managers who wish to reduce capital expenditures (truck purchases) and decrease expenses (maintenance, insurance and fuel) related to their truck fleet.



ROLL OFF SYSTEM



KARGO KING cSIX RENTAL OR LUMBER SERIES

The Kargo King Rental System is a truck mounted roll off system specifically designed and engineered to meet the unique demands of present day rental equipment fleets. Over the past twenty years the number of rental equipment pieces introduced to market has increased dramatically in both volume and complexity. This increase has brought with it numerous challenges related to safe loading and transport of rental equipment. Be it small compaction equipment, scissor lifts or aerial devices, each piece of equipment presents its own potential safety concerns. The Kargo King Rental System addresses these concerns by design!

Supporting the Building Supply & Lumber Industry, Kargo King's Lumber Deck allows for the loading and unloading of building supply and materials at ground level. Safety on the job site and in your yard is our top priority, and Kargo King's lumber deck and roll-off system allows for safe work in any weather.



CRANES



TELESCOPIC AND SERVICE CRANES

Light and compact cranes for light duty or medium applications often utilized for in-field/mobile service work but versatile enough to for other special applications.



ATLAS CRANES

ATLAS LOADING CRANES ARE SLIM, FAST AND SAFE AND EQUIPPED AS YOU WISH.

For example with the electronic safety system ACM, a support distance measurement, radio remote control or simply, without any electrical support. With a range of 3.70 m to 22 m with load capacities from 0.99 t to 13 t, special designs for building materials, logistics, loading work, lifting work cages or special types, they have one thing in common: the well thought-out and practical quality.



AERIALS



Drive Products understands the importance of adding the highest quality aerial system to your team. You don't cut corners in your work, and you need equipment that is built on that same promise. Entrust Drive Products to assist you in choosing your aerial device configuration to get the most done for your unique job requirements.

ALDERCOTE

Aldercote manufactures fully integrated van mounted aerial lift solutions with unique features not found in competing brands.



SNOW & ICE EQUIPMENT



WESTERN SNOWPLOWS

Western Products are the leading manufacturer of snow and ice control products, with a full line of CONTRACTOR GRADE® snow plows for commercial snow plowing as well as personal-use and light municipal snow removal operations.

Western Products also offers a variety of hopper and tailgate-mounted ice control sand and salt spreaders, along with a wide selection of performance-enhancing snow plow and spreader accessories and parts.



TOOL BOXES & TANKS



TRADESMAN

Tradesman® toolboxes and storage tanks are tough and rugged and are built to last. Our full-range of high quality toolboxes and tanks will give you all the storage you need. Each tank is hand welded for strength and reliability, available in heavy-duty aluminum, ranging in capacities from 30 to 100 gallons, and configurations of rectangular, vertical or L-shaped to meet most truck applications. 40+ Years of High Quality Design & Manufacturing. Manufactured in Winters, Texas.



NOTES

Dotted lines for notes

NOTES

Dotted lines for taking notes.

NOTES

Dotted lines for taking notes.



DISTRIBUTION + MANUFACTURING PHONE NUMBERS

- | | | | |
|------------------|------------------|---------------|------------------|
| / Toronto (H.O.) | TEL 905.564.5800 | / Mount Pearl | TEL 709.753.0984 |
| / Etobicoke | TEL 416.679.1573 | / Morden | TEL 204.201.1197 |
| / Tillsonburg | TEL 519.842.7200 | / Winnipeg | TEL 204.201.1036 |
| / Windsor | TEL 519.727.4398 | / Regina | TEL 306.359.3677 |
| / Ottawa | TEL 613.691.4196 | / Edmonton | TEL 780.960.6826 |
| / Montréal | TEL 514.856.0407 | / Calgary | TEL 403.720.8033 |
| / Laval | TEL 450.661.6209 | / Vancouver | TEL 604.888.4464 |
| / Halifax | TEL 902.468.8288 | / Elkhorn | TEL 262.723.7914 |
| / Moncton | TEL 506.388.3465 | / Winters | TEL 325.812.2260 |



POWER BEYOND

driveproducts.com

ISO Certified by an Accredited Registrar • National Safety Mark Approval • ©Drive Products 2023
 Drive Products reserves the right to make changes in specifications, packages, or to discontinue options without notice at any time.