



# TRUCK EQUIPMENT SOLUTIONS

DP MANUFACTURING DIVISION



# TABLE OF CONTENTS

About Us .....1  
 National Footprint..... 2  
 Manufacturing.....3

## TRUCK EQUIPMENT HOUSE - DPM

Landscape Dump Bodies ..... 4  
 Voth Box Delete Dump Body ..... 5  
 Voth HD Dump Body..... 6  
 US Landscape Body.....7  
 Chipper Bodies ..... 8  
 Flat Deck Bodies (Fixed & Dumping) ..... 9  
 Service, Crane and Walk in Bodies .....10  
 Dump Body Pick Up Insert ..... 11  
 Kargo King Roll-Off System  
     C2..... 12  
     C5 & C6..... 13  
     C7 ..... 14  
 Tradesman Underbody Toolboxes - Aluminium..... 15  
 Tradesman Crossboxes ..... 16  
 ORO Fleetsides ..... 17  
 ORO Accessories  
     Booster & Mechanics Shelving.....18  
 BigMax Cranes & Outriggers ..... 19  
 BigMax 35T Cable Hoist Roll-Offs.....20

## COMMERCIAL FLEET

Tradesman Toolboxes .....22  
 Tradesman Tanks..... 23  
 Voth Flat Decks ..... 24  
 Voth Box Dump Bodies ..... 25  
 ORO Fleetsides Enclosed ..... 26  
 ORO Fleetsides Tire..... 27  
 BigMax Cranes .....28

# ABOUT US

---

## THE BEGINNING

Recognizing a need for industry specialists, Greg Edmonds established Drive Products in 1983 to supply products and systems to the Truck Mounted Equipment industry in Ontario. The foundation was set with a leased 3,000 sq. ft. building in Toronto, three employees, and \$100,000 starting inventory. Drive Products' success continued in the form of exponential growth with help from partners with a wealth of knowledge and experience who shared a common vision. Operations were expanded through the addition of branch locations and the integration of driveline and cable manufacturing. The company strengthened its market position by securing an exclusive distribution arrangement with Muncie Power Products and by acquiring additional complimentary product lines.

## DRIVE PRODUCTS TODAY

Drive Products continues to operate as a family-owned business with Robert Edmonds in the main leadership role as President. Drive Products now offers a complete range of truck mounted equipment, products, services and solutions through a growing branch and partner network across North America. Drive Products has continued to build on its diversification strategy centred around strong distribution, systems integration, unfitting and manufacturing capabilities. Most recently, Drive Products has established its position as a leader of truck equipment manufacturing in Canada with the additions of premium truck equipment manufacturers Kargo King Roll Off Systems (2013), Voth Truck Bodies (2014), Snowbull Tractor Plows (2017), G.W. Anglin (2019), Del Equipment (2020) and ORO Truck & Utility (2023).

## DRIVE PRODUCTS TOMORROW

Drive Products will continue its commitment to providing premium solutions, products and services across North America with the best people in the industry. The 2019 addition of G.W. Anglin manufacturing and light unfitting is the latest example of our commitment to better serve our customer base in Canada and U.S.A. Drive Products is now uniquely positioned to provide regional and national fleets with the full range of unfitting services from Light Truck & Van to Class 8 Heavy Truck. Drive Products will continue to seek opportunities and improve capabilities with the goal of adding increased value to our customers into the years to come.

---

## OUR MISSION

Providing premium quality solutions, products and services from  
the best people in the industry.

## CORE VALUES

**INTEGRITY**

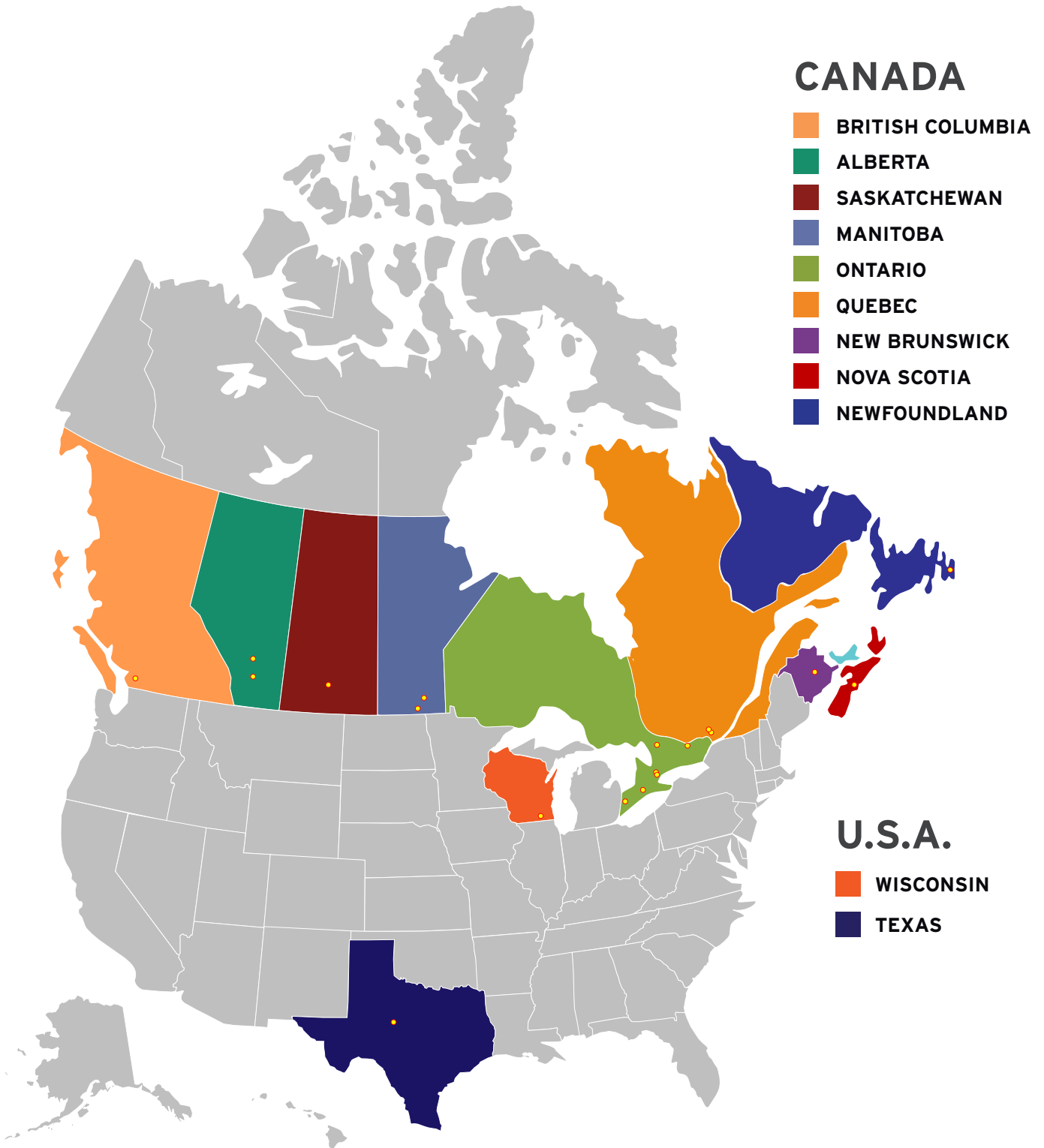
**RESPONSIVENESS**

**QUALITY FOCUSED**

**PASSIONATE**

# NORTH AMERICAN FOOTPRINT

(TOTAL AREA: 1,000,000 SQ.FT.+)





# MANUFACTURING



**TILLSONBURG**

**WINTERS**

**WINDSOR**

**MORDEN**

Drive Products - Manufacturing Division consists of 5 manufacturing facilities with a combined space of 350,000+ sq.ft of manufacturing space. These facilities manufacture an assortment of truck bodies, truck equipment, and truck accessories for the North American Market. We use high quality steel materials and specialize in premium marine grade aluminum for our truck bodies. Our Canadian facilities are CWB (Canadian Welding Bureau) certified ensuring our manufacturing process maintains the highest level of quality.

Our facilities follow strict quality guidelines required in ISO certification or equivalent accreditation. Our manufacturing process is robust and follows rigorous quality testing and welding practices on every component of truck bodies, and equipment that we build. In combination with our engineers, skilled trade employees and cutting-edge technology (laser, punching, CNC milling, CNC press brake, manual and robotic welding, zinc plating, e-coat, wet paint and powder coat). Drive Products – Manufacturing Division is set to meet the demands of North American market.



# LANDSCAPE DUMP BODIES



## STEEL, HYBRID (STEEL BODY AND ALUMINUM GATES) & ALUMINUM

From Light Duty to Contractor Grade Landscape Dump Bodies, Drive Products offers a wide range of models that are boldly designed and manufactured for maximum durability based on today's demanding applications. All Landscape Dump Bodies are built with precision to provide superior service and reliability and are backed by an industry leading warranty.

### AVAILABLE LENGTHS

- 9'9" (2170lbs, 2.6 cubic yards, 7 ton hoist)
- 11'9" (2410lbs, 3.7 cubic yards, 7 or 12 ton hoist)
- 12'9" (2641lbs, 4.1 cubic yards, 7 or 12 ton hoist)
- 13'9" (2819lbs, 4.4 cubic yards, 12 ton hoist)

### STEEL



### HYBRID



### ALUMINUM





# BOX DELETE



## 8'5" ALUMINUM UNIBODY DUMPY BODY

### STANDARD FEATURES INCLUDE

- UNDERSTRUCTURE: UNIBODY
- RECOMMENDED CA: 56" CA (8' BOX DELETE)
- CHASSIS INFO: 2023+ F250 (SRW)
- HEADBOARD HEIGHT OPTIONS: 50"
- FOLDING SIDE WALLS HEIGHT OPTIONS: 15"
- FOLDING SIDES: 15"
- CYLINDER OPTIONS: SCISSOR LIFT - RATING TBD
- TARP SYSTEM OPTIONS: MANUAL CRANK
- TAILGATE HEIGHT OPTION: 21"
- FOLDING SIDE MATERIAL: 1/8" 3003
- TAILGATE MATERIAL: 1/8" 3003
- HEADBOARD MATERIAL: 1/8" 3003"
- FLOOR MATERIAL: 3/16" 5052
- REAR LIGHTING: 4-STT, 2 REVERSE, 5 MARKER, 2
- WEIGHT RANGE: 972LBS
- DUMP ANGEL: 450



# STEEL HARDOX DUMP BODY



## STEEL

The Voth Unibody design features a one-piece floor, smooth understructure and low mounting height. Voth's signature design, this unibody dump is manufactured for heavy duty service, without turning your truck in to an oversized dump truck. The low mounting height allows for a low center of gravity with increased stability on the road and on the job site.





# US LANDSCAPE BODY



## VOTH STEEL AND ALUMINUM

Built on the stability of the Voth Unibody design, the US Landscape Body has high solid sides, with rear barn doors and a side swing access door. A favourite of our neighbours to the south, this body design has become a highly valued design across North America.

More details and specs coming soon.



# CHIPPER BODIES



## ALUMINUM

Voth Aluminum Chipper Bodies are made for heavy duty service and are custom designed according to customer needs and specifications.





# FLAT DECK BODIES - *FIXED & DUMPING*



**STEEL, GALVANIZED OR ALUMINUM WITH APITONG WOOD/ OR STEEL TOPS**

Voth Flat Decks and Dumping Flat Decks are custom built to your specifications.

Available in Lengths from 8' to 26'





# SERVICE, CRANE AND WALK IN BODIES



## VOTH

Voth's all aluminium service body is manufactured in rugged, corrosion-resistant 5052-H32 marine grade aluminium. Heavy gauge construction provides additional strength, reducing maintenance and maintaining improved fuel efficiency and payload capacity at 45% lighter than steel.

## SERVICE BODIES



## CRANE BODIES



## WALK IN BODIES





# DUMP BODY PICK UP INSERT

## VOTH STEEL & ALUMINUM

Voth Dump Body Pick Up Truck Inserts are custom designed for 1/2 , 3/4 and 1 ton short or long pickups.



## PRODUCT INFORMATION:

- Landscape style
- Steel or Aluminum
- Twin Cylinders allow for lower mounting and higher lifting capacities
- 12V Single pump power back



# ROLL OFF SYSTEM



## KARGO KING cTWO

Designed specifically for the needs of Equipment Rental fleets, the Kargo King Rental Deck is designed to accommodate low clearance equipment with it's signature beavertail, making the loading and unloading of scissor lifts and compaction equipment safe and efficient. Unlike traditional hook lift systems, Kargo King's locking mechanism design means the Rental Deck sits lower at ground level with gradual incline to accept specialized equipment.





# ROLL OFF SYSTEM



## KARGO KING cFIVE & cSIX

The Kargo King Detachable System allows business owners and fleet managers to think and act differently! This one-of-a kind truck mounted roll off system was designed with the idea that contractors often need their trucks for more than one job type. By permanently mounting a truck body onto truck chassis', business owners tie up valuable working capital when these same truck bodies can be interchanged at a fraction of the overall cost. The Kargo King DS is the comprehensive solution for business owners and fleet managers who wish to reduce capital expenditures (truck purchases) and decrease expenses (maintenance, insurance and fuel) related to their truck fleet.



# ROLL OFF SYSTEM



## KARGO KING cSEVEN

The Rental System is a truck mounted roll-off system specifically designed and engineered to meet the unique demands of present-day rental equipment fleets. Over the past twenty years the number of rental equipment pieces introduced to the market has increased dramatically in both volume and complexity. This increase presents numerous challenges related to safe loading and transport of rental equipment. Be it small compaction equipment, scissor lifts or aerial devices, each piece of equipment presents its own potential safety concerns. The Kargo King Rental System addresses these concerns by design!



# UNDERBODY TOOLBOXES



## TRADESMAN

Underbody Boxes are packed with features to last a lifetime. Reinforced lid resists bending while protects box from attempted break ins.

### FEATURES

- Steel and Aluminium construction
- Weatherproof gasket prevents leakage
- Steel chain or cables supports allow lids to remain open at 90 degree opening
- Strong, lockable stainless steel T - handles protects valuables
- Rust and corrosion resistant powder coat finishes





# CROSSBOXES



## TRADESMAN

Tradesman Full Lid Boxes provide secure and convenient truck bed storage solutions for everyday use. Full Lid Boxes are constructed from a aluminium diamond plate or steel for strength and durability. Boxes are equipped with weatherproof gaskets creating a tight seal to keep out moisture and dirt. Boxes also contain self-rising gas cylinders to keep lid open. Boxes are equipped with a locking mechanisms to keep your tools and equipment secure.

### FEATURES

- Available in aluminium diamond plate or steel
- Equipped with tight sealed weatherproof gaskets to keep out moisture and dirt
- Self-rising gas cylinders
- Equipped with locking capabilities to keep tools and equipment secure



# FLEETSIDES



## ORO DESIGN

From the first concept sketch in the office to the last nut and bolt on a finished service body, an ORO service truck incorporates over three decades of design and manufacturing experience into one robust platform. We maximize the limited space in a service body by incorporating deeper cabinets, multi-functional storage solutions and innovative design features to help store the right parts and components for any job; broadening the capabilities of service technicians and making them more efficient on the job site. By starting with a standard platform and customizing the options based on specific site requirements, we're ensuring the best solutions for even the most unique field service challenges.



# BOOSTERS MECHANICS

## ORO DESIGN

From Light Duty to Contractor Grade Landscape Dump Bodies, Drive Products offers a wide range of models that are boldly designed and manufactured for maximum durability based on today's demanding applications. All Landscape Dump Bodies are built with precision to provide superior service and reliability and are backed by an industry leading warranty.

## BOOSTERS



## MECHANICS SHELVING





# CRANES & OUTRIGGERS



## BIGMAX

Strong, light weight hexagonal boom construction, a TC Series truck crane can safely lift up to 5,300 pounds. TC Series cranes come in 7 models with hydraulic extensions of up to 19.5 feet. These cranes can be powered by either a power take-off pump or a battery operated power pack. Designed for low maintenance, these cranes use US standard hoses and hose ends making them easy to service and maintain.

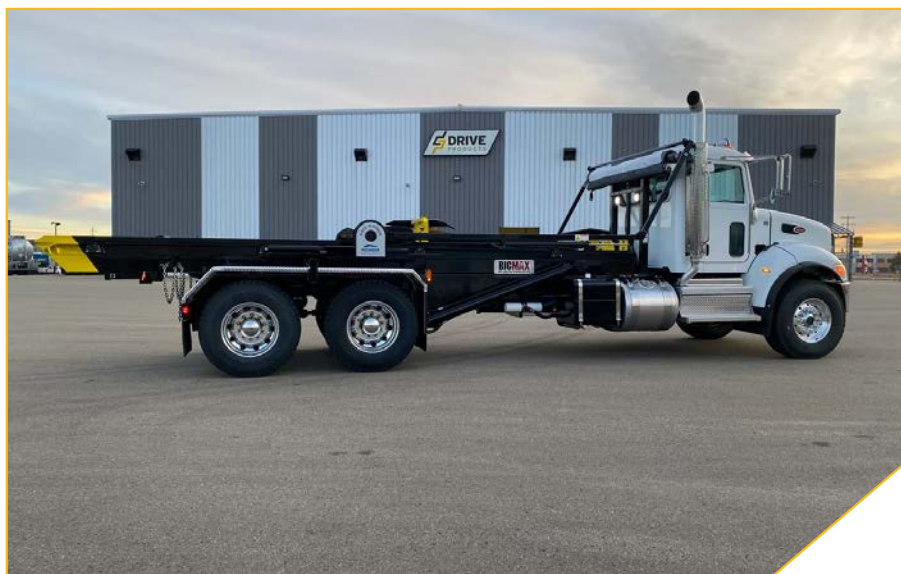


# 35T CABLE HOIST ROLL-OFFS



## BIGMAX

Build your fleet for success with Voth's line of standard van shelving and accessories. Created with the Ford Transit in mind, select the solutions to keep your business on the go with shelving, tool racks and cabinetry to keep your crew working safe and secure on the road.





# COMMERCIAL FLEET





# TOOLBOXES



## TRADESMAN

### CUSTOMIZE YOUR TRUCK

Our full-range of high quality toolboxes and tanks will give you all the storage you need.



# TRANSFER TANKS



## TRADESMAN

High Quality, Durable, and Functional.

Each tank is hand welded for strength and reliability, available in heavy-duty aluminium, ranging in capacities from 30 to 100 gallons, and configurations of rectangular, vertical or L-shaped to meet most truck applications



# FLAT DECKS



## VOTH

Voth Truck Bodies manufacturing is supported by a team of sales, drafting and design experts. When your work demands custom solutions, Voth has the expertise you need. Custom flat deck features include custom length, design features and more.





# BOX DUMP BODIES



## VOTH STEEL AND ALUMINUM

Voth Truck Bodies manufacturing is supported by a team of sales, drafting and design experts. When your work demands custom solutions, Voth has the expertise you need. Custom dump body features include custom length, design features, paint, and more.



# FLEETSIDE ENCLOSED



## ORO DESIGN

Our heavy duty line of ORO Fleetsides gives your standard pickup the ultimate flexibility. Comes in 6' and 8' options and can be open or completely enclosed like a traditional truck cap. Optional slide-out trays, drawer sets, compressors and lighting allow you to create your perfect setup.





# FLEETSIDE TIRE



## ORO DESIGN

From the first concept sketch in the office to the last nut and bolt on a finished service body, an ORO service truck incorporates over three decades of design and manufacturing experience into one robust platform. We maximize the limited space in a service body by incorporating deeper cabinets, multi-functional storage solutions and innovative design features to help store the right parts and components for any job; broadening the capabilities of service technicians and making them more efficient on the job site. By starting with a standard platform and customizing the options based on specific site requirements, we're ensuring the best solutions for even the most unique field service challenges.





# CRANES



## BIGMAX CRANES

Strong, light weight hexagonal boom construction, a TC Series truck crane can safely lift up to 5,300 pounds. TC Series cranes come in 7 models with hydraulic extensions of up to 19.5 feet. These cranes can be powered by either a power take-off pump or a battery operated power pack. Designed for low maintenance, these cranes use US standard hoses and hose ends making them easy to service and maintain.









**DISTRIBUTION + MANUFACTURING PHONE NUMBERS**

- |                  |                  |              |                  |
|------------------|------------------|--------------|------------------|
| / Toronto (H.O.) | TEL 905.564.5800 | / St. John'S | TEL 709.753.0984 |
| / Etobicoke      | TEL 416.619.1573 | / Moncton    | TEL 506.388.3465 |
| / Niagara        | TEL 905.641.5464 | / Morden     | TEL 204.201.1197 |
| / Tillsonburg    | TEL 519.842.7200 | / Winnipeg   | TEL 204.201.1036 |
| / Windsor        | TEL 519.727.4398 | / Regina     | TEL 306.359.3677 |
| / Ottawa         | TEL 613.691.4196 | / Edmonton   | TEL 780.960.6826 |
| / Montréal       | TEL 514.856.0407 | / Calgary    | TEL 403.720.8033 |
| / Laval          | TEL 514.519.0367 | / Vancouver  | TEL 604.888.4464 |
| / Halifax        | TEL 902.468.8288 | / Elkhorn    | TEL 262.723.7914 |
| / Halifax T&U    | TEL 902.468.3788 | / Winters    | TEL 325.977.8269 |



**POWER BEYOND**

[driveproducts.com](http://driveproducts.com)



Intertek

ISO Certified by an Accredited Registrar • National Safety Mark Approval • ©Drive Products 2023  
Drive Products reserves the right to make changes in specifications, packages, or to discontinue options without notice at any time.